



- Centralized system with multi-monitor client display
- Advanced matrix wall management
- Unlimited number of cameras, servers and clients supported
- Scalable client-server architecture
- Central alarm status, data mining & reporting functions
- Multi-level, user-access privilege management
- Data protection and RAID storage management

Surveon Control Center (SCC) is based on the enterprise level client-server architecture and the domain based framework with the advanced features including TV-wall, central alarm management, I/O control, and advanced event report system. With the SCC, project managers can easily handle a distributed system with unlimited cameras, multiple servers and clients, and effectively take charge of the entire system using the centralized management.

SCC Specifications

General & Miscellaneous	<ul style="list-style-type: none"> • Unlimited NVR Hosts & IP Device Supported • Live NVR Status & NVR Storage Info • Auto Login & Auto Connection Lost Recovery
Live View (Live Monitoring)	<ul style="list-style-type: none"> • Unlimited Live View Channels • Video Intelligence Supported • Real-Time Audio Monitoring • HTML and Image Overlays
Multiple Displays	<ul style="list-style-type: none"> • Unlimited View Monitors Displays • Direct Display to Secondary Monitors • Supports Live View, Playback and eMap Functions • Centralized Matrix Wall Management
E-Map	<ul style="list-style-type: none"> • Unlimited E-Map Hosts • Hierarchical Map Structure • Multiple Maps Supported • Real Time Event Alert • 4 E-Map Live Video
Playback (Investigation)	<ul style="list-style-type: none"> • 4 Channels Playback • Instant Playback Supported • Search by Date, Time, Camera, Event Type, VI Event Combinations • Post Search via VI Analyzer • Quick Search via Timeline Navigation Bar
Event Log	<ul style="list-style-type: none"> • Multiple Event Log (NVR Login/Logout, NVRStart/Stop, Monitor Start/Stop, Schedule Start/Stop, Disk Full, Disk Error, System Recycle, Keep Day Notification, System Abnormal, Network Abnormal, Camera Connection Lost, I/O Connection Lost, Digital Input Trigger, Video Intelligence, Video Lost, IP Change Detection, POSAbnormal Transaction) • Event Notification Setting • Notification of SMS & Email Alerts • Notification of Output Alerts • Alarm Event Priority Define • Event Log Filter (Search by Date, Time, Log Type) • Log File Export
PTZ Control	<ul style="list-style-type: none"> • Control of Joystick • Remote PTZ Control
Digital I/O Manager	<ul style="list-style-type: none"> • Centralized I/O Management • On Screen Virtual I/O Button

Hardware Requirements

	<=20	Unlimited	
SCC Server	Operating System	64-bit : Windows 7 Professional, Enterprise, Ultimate	
	CPU	Intel Core i3 3.3GHz or above	Intel Core i7 3.4GHz or above
	RAM	4 GB or above	
	Display Card	nVidia GeForce GT610 1GB or above	
	Hard Drive	SATA 7200 RPM, 500 GB or above	
	Network Interface	1Gbps or above	
Client (+Matrix Wall Client)		<=20	Unlimited
	Operating System	64-bit : Windows 7 Professional, Enterprise, Ultimate	
	CPU	Intel Core i7 3.4GHz or above	
	RAM	4 GB or above	
	Display Card	nVidia GeForce GTX 660 2GB or above	
	Hard Drive	SATA 7200 RPM, 500 GB or above	
Network Interface	1Gbps or above		

Ordering Information

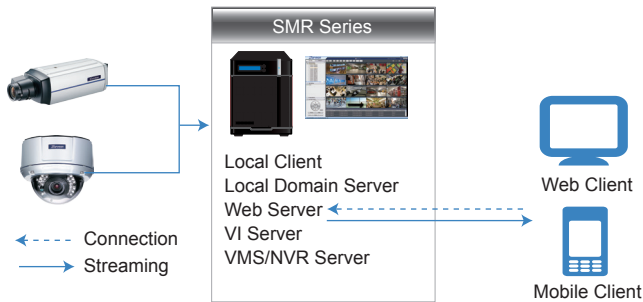
Part Number	Description
ZCD01H-0010	SCC with 1 Host License
ZCD05H-0010	SCC with 5 Host License
ZCD10H-0010	SCC with 10 Host License
ZCD20H-0010	SCC with 20 Host License
ZCDULT-0010	SCC with Unlimited Host License



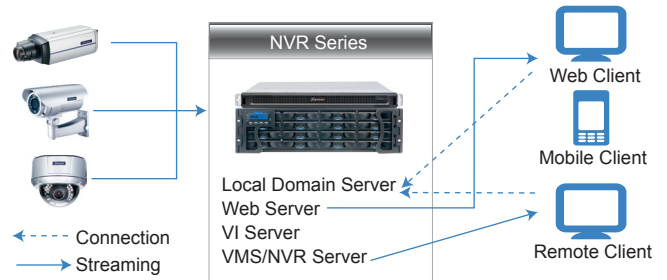
Oriente 65-A No. 2848, Col. Asturias, Col.
 Cuauhtémoc, C.P. 06850, México, D.F. Tels.:
 (55) 5740 4630 / (55) 5740 2142
 ventas@telsa.com.mx
 www.telsa.com.mx

* All specifications are subject to change without notice.
 * All brand names and registered trademarks are the property of their respective owners.

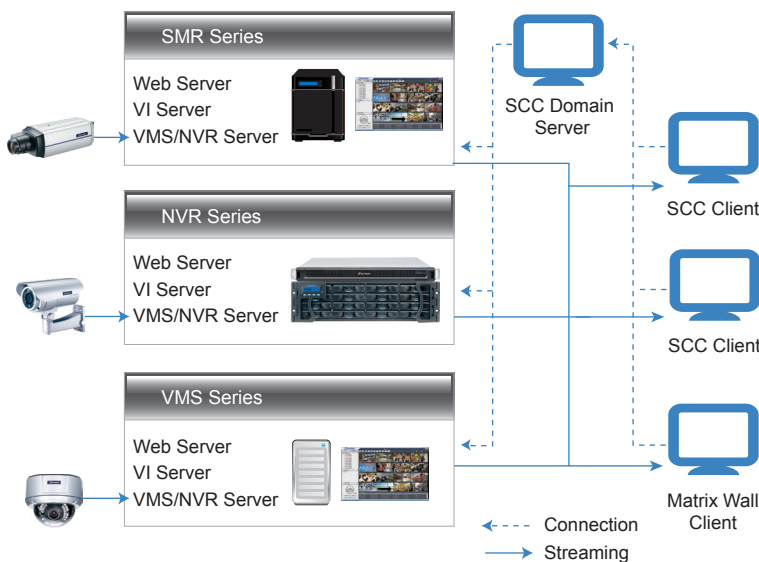
All in one Architecture



Client - Server Architecture



SCC Architecture



SCC Modules

- **VMS/NVR Server:** Combines video recording, archival and retrieval functionalities for individual servers/standalone PCs.
- **Local Domain Server:** The interface between the VMS/VI/Web Servers and any clients.
- **Local Client:** Local access, preinstalled software for monitoring, access and configuration. Serves as the default .configuration point for NVR2000 series, which do not have a local client.
- **VI Server:** The video intelligence processing point for a VMS solution. Maybe be co-located with the VMS server, or exist on a separate server/PC.
- **Web Server:** Process video streaming for web client function.
- **Remote Client:** User installed software capable of accessing, configuring, and monitoring SMR/NVR, including PCs with VMS series installed.
- **SCC Domain Server:** Allows centralized control over multiple. SMR/NVR/VMS Server points and connections from multiple clients.
- **SCC Client:** Software capable of accessing multiple. SMR/NVR/VMS Servers through the SCC Domain Server.
- **Matrix Wall Client:** Software for Client PC. Allows Centralized Control Multiple Client PC's monitors.

Matrix Wall Architecture

