

GANZ **AI BOX**



VIDEO ANALYTICS AND DEEP LEARNING



GANZ AI BOX

VIDEO ANALYTICS AND DEEP-LEARNING

The AI BOX is equipped with numerous algorithms for deep learning and analysis and is able to recognize detected objects precisely and immediately and classify them including: People, Vehicles, Motorcycles, Bicycles.

The AI Box can be used for multiple applications including Surveillance, Business Intelligence, Access Control, Loss Prevention, and more.

FEATURES

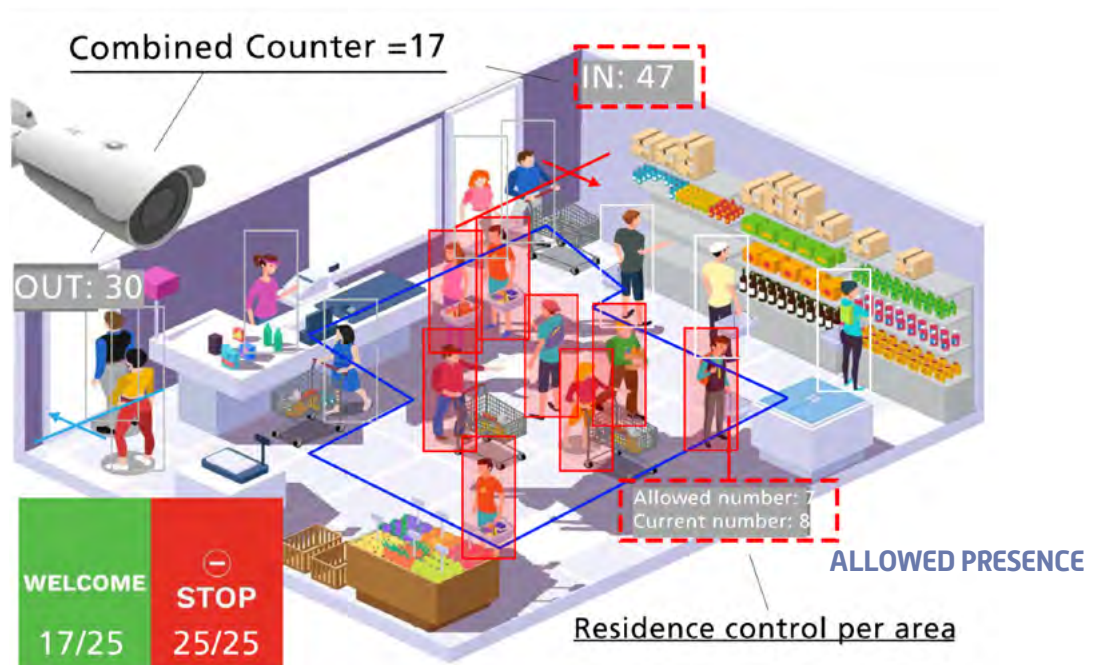
- Easy configuration and quick system start-up.
- Immediate and precise recognition
- Deep learning-based AI engine and analytics rule engine
- Multiple AI video analytics package choices
- Ideal for Surveillance, Business Intelligence, access control, loss prevention, etc.
- Compatible with existing Onvif based VMS, NVR/DVR, alarm monitoring system
- Easy integration with an annotated video stream
- Easy integration with various APIs and protocols (ONVIF, REST, E-mail, TCP, RS485)
- HTML5 Web-based configuration (no plugin)
- ONVIF & RTSP compliant
- Equipped rule engine to detect various situations and actions such as 'Intrusion', 'Occupancy', 'Loitering', 'Enter/Exit', 'Line Crossing'
- Counts the number of objects that exist in a specific zone or counts the number of objects that pass through a specific zone

4, 8, AND 16 CHANNEL MODELS



OCCUPANCY MANAGEMENT MONITORING EXAMPLE USING MULTIPLE RULES

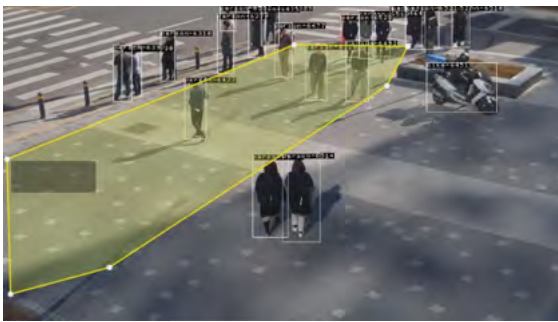
- People Counting Enter/EXIT (most optimized tuned AI counter engine)
- Presence: set up to the number allowed at indicated zone.
- Combined counts





Detection of multiple objects with classifications without calibration

BUSY SCENE



Intuitive creation of specific shaped zones

ZONE SETUP



Intrusion, loitering, stop and line crossing

ZONE TYPE



Classification under difficult light conditions

ACCURATE DETECTION & CLASSIFICATION



Classification of objects at a distance

FAR OBJECTS

OPTIONAL LICENSES

License Model #	Description	License Model #	Description
ZSL-Gender	Gender Detection	ZSL-Fallen	Fallen Person Detection
ZSL-SHdetect	Safety Helmet Detection	ZSL-PrivacyMask	Privacy Masking
ZSL-Maskdetect	Mask/Sunglass Detection	ZSL-Count	Combined Counter Event Trigger
ZSL-HVdetect	Human+Vehicle Detection (Bus, Truck, Car, Human)	ZSL-Tdetect	Thermal Detection (Human)
ZSL-Fdetect	Object Detector For Fisheye Camera		

GANZ AI BOX		ZN-AIBOX4 (4ch)	ZN-AIBOX8 (8ch)	ZN-AIBOX16 (16ch)
		ZN-AIBOX4-FR1 (1 Ch FR)	ZN-AIBOX8 FR1 (1ch FR)	ZN-AIBOX16-FR1 (1ch FR)
		-	ZN-AIBOX8-FR4 (4ch FR)	ZN-AIBOX16-FR4 (4ch FR)
AI Engine	Detector	Deep learning based Object Detection & Classification: Human, Car, Bike and other objects (optional license). Special camera support: Thermal (Human only, optional license), Fisheye (Human only, optional license)		
	Tracker	Multi object Tracking		
	Recognizer	Face Recognition Engine (optional license)		
		License Plate Recognition Engine (optional license)		
	Behavior Analyzer	Fallen Person (optional license)		
Event Trigger	Behavior Detection Trigger	Intrusion, Occupancy, Loitering, Enter/Exit, Line Crossing, Stopping, Direction, Tailgating (optional license)		
	Counting Trigger	Object Counting (Line, Zone, Queue (Presence), Event Counting)		
	System Trigger	Alarm-In, Recurrence		
	Recognition Trigger	Face Recognition (optional license), License Plate Recognition (optional license)		
	False Alarm Filter	Yes		
	Combined with other triggers	Yes		
Event Action	Network Action Handler	OnVIF, HTTP, TCP, E-mail, FTP		
	System Action Handler	Relay Out, RS485		
	Annotated Video Stream	Video Pop up on Channel 0 multi-view stream		
	Pre/Post snapshot	Yes		
Analytics Report	Counter Report	Number of objects (Human, Car, Bike, etc.) in zones, Line crossing counting (Line cross, Enter, Exit), Event counting		
	Visitor Analytics Report	Age, Gender, VIP (Need to enable face recognition, optional license)		
	Queue Management Report	Queue length, Average Queue Time		
	Path-map / Thermal (human) Report	Yes / Yes		
UI	Web UI	HTML5 Web UI (No Plugins)		
API	API	OnVIF, REST		
Video	Input Video Channels	Up to 4ch	Up to 8ch	Up to 16ch
	Max Video Input Res.	4K @ 30fps (1080P @ 120fps)	4K @ 60fps (1080P @ 240fps)	4K @ 120fps (1080P @ 480fps)
	Video Input Method	RTSP, OnVIF		
	Supported Input Video Format	H.265 / H.264		
	Number of Annotated Video Output Stream	4 + 1 (Channel 0 encoding)	8 + 1 (Channel 0 encoding)	16 + 1 (Channel 0 encoding)
	Video Output Stream Method	RTSP over TCP, RTSP over Web socket		
	Monitor Out	HDMI x 1 (For Diagnostic)		
	Monitor Resolution	up to 1080p (For Diagnostic)		
Alarm I/O	Input / Output	4CH / 1CH (Relay)		
Interface	USB	USB3.0 X 2ports		
	RS-485	1		
	RS-232	-		
	LAN	10/100/1000 Mbps x 2		
Additional	Watchdog	Yes		
Power	Power Supply / Power Consumption	12V/2A adapter / 20W max.		
Environment	Temperature / Humidity	32°F~104°F / (0°C ~ 40°C) / 10 ~ 90% NC		
Chassis	Dimensions	7.9" x 5.2" x 1.5" (200mm x 131mm x 38mm)		
	Weight (Net/Gross)	0.6 lbs / 1.1 lbs (0.3kg / 0.5kg)		
Certifications	Certifications	CE, FCC, KC		

* License key needed for optional features

All specifications are subject to change without notice. See online catalog for the most up-to-date details.