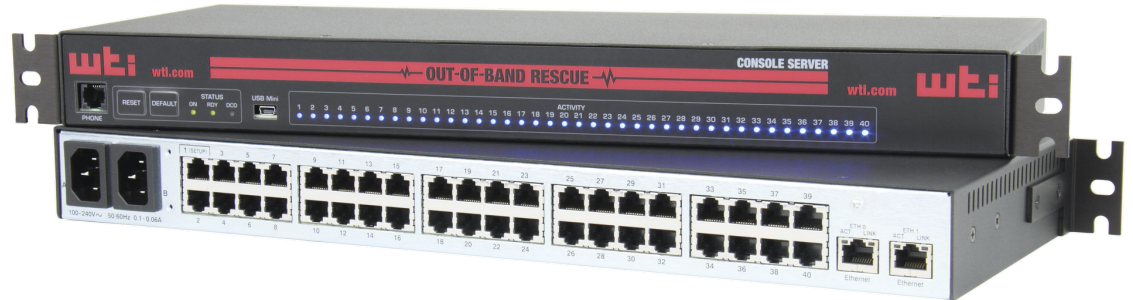




GigE Console Server DSM Series

Out-of-Band Console Management for Secure Networks



With 4G LTE Cellular!

IP-to-Serial Console Management:

- 8, 24 or 40 RS232 RJ45 Serial Ports
- Ctrl+Break Command Block Options
- Reverse/Outbound SSH

In-Band/Out-of-Band Access:

- Primary Ethernet: 10/100/1000
- **Optional** Secondary Ethernet with Fallback Capabilities: 10/100/1000
- **Optional** 56k v.92 Modem with Dialback Security
- **Optional** 4G LTE Cellular
- **Optional** Always On with Failsafe Dual Power Supplies
- Local Access (RJ45 RS232 & USB Mini Set-up Ports)
- Supports IPv4 and IPv6

Security & Authentication:

- HTTPS, SSHv2, SNMPv3
- Transport Layer Security (TLS) v1.2
- IPsec / OpenVPN
- IPtables
- Two-Factor Authentication: RSA® Ready
- AAA: LDAP/Active Directory/Kerberos/RADIUS/TACACS+
- Embedded Validated FIPS 140-2 Cryptographic Module
- Port-Specific Password Protection
- Invalid Access Lockout & Alarm

Event Monitoring, Logging & Notification:

- Alarms via SNMP, Email or Text Message
- Over-Temperature Alarms
- Ping-No-Answer Alarm (Failed Ping Command)
- Power Cycle Alarm
- Temperature, Command & Event Logging
- Lost Communication Alarm
- Buffer Threshold Alarm
- No Dialtone Alarm
- Time Stamp & Non-Connect Port Buffering
- SYSLOG Messages

Unit Management:

- RESTful Web Services API
- DHCP/FTP/TFTP/SFTP/SCP
- CLI & HTML5 Web-Based GUI
- Compatible with WMU Enterprise Management Software
- Multiple Concurrent SSHv2 Sessions
- Full MIB Support
- NTP for True Server Sync

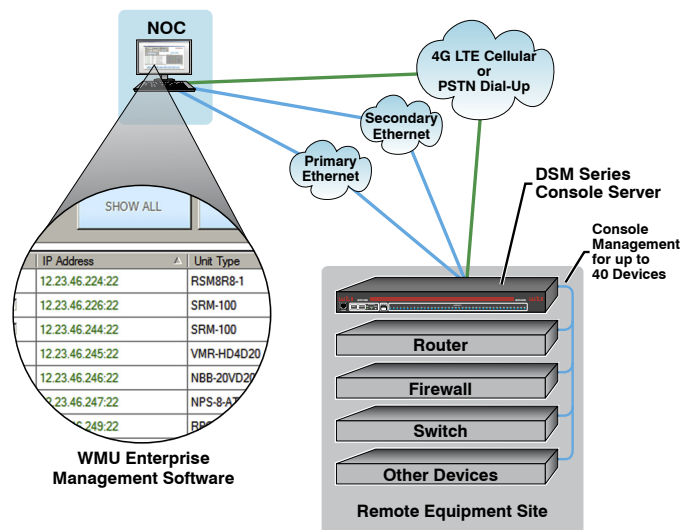
DSM-40-E

Dual Gigabit Ethernet Ports, Dual Power Supply

DSM Series console servers provide secure, reliable out-of-band access to console ports and aux ports on crucial network elements, allowing emergency access to mission critical device infrastructure.

When unresponsive network elements disrupt communication, DSM Series Console Servers provide fast, secure, OOB access to routers, switches, firewalls and other equipment. Create an SSHv2 connection to any device on your network via 10/100/1000 Ethernet, 4G LTE Cellular or PSTN dial-up, and then remotely tweak configuration parameters, view audit logs or implement troubleshooting functions to restore your network without the expenses, delays and hassles of a truck roll or service call.

The DSM's monitoring and alarm functions simplify remote network management by providing an automated response to high rack temperatures, failed pings and other signs of trouble. Monitoring and reviving network devices has never been easier!





GigE Console Server

DSM Series

Model Number	RS232 Ports	Ethernet Port(s)	Voltage	Power Input	Dial-Up Modem
DSM-8	(8) RJ45 (DTE)	1	100 - 240 VAC, 50/60 Hz, 10 Watts Max.	(1) IEC-320-C14 Inlet*	Yes
DSM-8NM	(8) RJ45 (DTE)	1	100 - 240 VAC, 50/60 Hz, 10 Watts Max.	(1) IEC-320-C14 Inlet*	No
DSM-8-E	(8) RJ45 (DTE)	2	100 - 240 VAC, 50/60 Hz, 10 Watts Max.	(2) IEC-320-C14 Inlets*	Yes
DSM-8-NM-E	(8) RJ45 (DTE)	2	100 - 240 VAC, 50/60 Hz, 10 Watts Max.	(2) IEC-320-C14 Inlets*	No
DSM-8DC	(8) RJ45 (DTE)	1	-48 VDC, 0.3 Amp Max.	(1) Terminal Strip (#6-32)	Yes
DSM-8DCNM	(8) RJ45 (DTE)	1	-48 VDC, 0.3 Amp Max.	(1) Terminal Strip (#6-32)	No
DSM-8DC-E	(8) RJ45 (DTE)	2	-48 VDC, 0.3 Amp Max.	(1) Terminal Strip (#6-32)	Yes
DSM-8DCNM-E	(8) RJ45 (DTE)	2	-48 VDC, 0.3 Amp Max.	(1) Terminal Strip (#6-32)	No
DSM-24	(24) RJ45 (DTE)	1	100 - 240 VAC, 50/60 Hz, 10 Watts Max.	(1) IEC-320-C14 Inlet*	Yes
DSM-24NM	(24) RJ45 (DTE)	1	100 - 240 VAC, 50/60 Hz, 10 Watts Max.	(1) IEC-320-C14 Inlet*	No
DSM-24-E	(24) RJ45 (DTE)	2	100 - 240 VAC, 50/60 Hz, 10 Watts Max.	(2) IEC-320-C14 Inlets*	Yes
DSM-24NM-E	(24) RJ45 (DTE)	2	100 - 240 VAC, 50/60 Hz, 10 Watts Max.	(2) IEC-320-C14 Inlets*	No
DSM-24DC	(24) RJ45 (DTE)	1	-48 VDC, 0.3 Amp Max.	(1) Terminal Strip (#6-32)	Yes
DSM-24DCNM	(24) RJ45 (DTE)	1	-48 VDC, 0.3 Amp Max.	(1) Terminal Strip (#6-32)	No
DSM-24DC-E	(24) RJ45 (DTE)	2	-48 VDC, 0.3 Amp Max.	(1) Terminal Strip (#6-32)	Yes
DSM-24DCNM-E	(24) RJ45 (DTE)	2	-48 VDC, 0.3 Amp Max.	(1) Terminal Strip (#6-32)	No
DSM-40	(40) RJ45 (DTE)	1	100 - 240 VAC, 50/60 Hz, 10 Watts Max.	(1) IEC-320-C14 Inlet*	Yes
DSM-40NM	(40) RJ45 (DTE)	1	100 - 240 VAC, 50/60 Hz, 10 Watts Max.	(1) IEC-320-C14 Inlet*	No
DSM-40-E	(40) RJ45 (DTE)	2	100 - 240 VAC, 50/60 Hz, 10 Watts Max.	(2) IEC-320-C14 Inlets*	Yes
DSM-40NM-E	(40) RJ45 (DTE)	2	100 - 240 VAC, 50/60 Hz, 10 Watts Max.	(2) IEC-320-C14 Inlets*	No
DSM-40DC	(40) RJ45 (DTE)	1	-48 VDC, 0.3 Amp Max.	(1) Terminal Strip (#6-32)	Yes
DSM-40DCNM	(40) RJ45 (DTE)	1	-48 VDC, 0.3 Amp Max.	(1) Terminal Strip (#6-32)	No
DSM-40DC-E	(40) RJ45 (DTE)	2	-48 VDC, 0.3 Amp Max.	(1) Terminal Strip (#6-32)	Yes
DSM-40DCNM-E	(40) RJ45 (DTE)	2	-48 VDC, 0.3 Amp Max.	(1) Terminal Strip (#6-32)	No
23R-WTI	23" Rack Adapter Kit for DSM Series				

4G LTE Cellular Option Requires Additional W4G-VZW, W4G-ATT or W4G-EUA Model Numbers for All DSM Series.

* 120 VAC Units Include IEC-60320-C13 to NEMA 5-15P Power Cable. Other Power Cables may be ordered separately.

Port Buffer:	256K per RS232 Port
Ethernet Port(s):	10/100/1000 BaseT, RJ45
Internal Modem Option:	56K v.92 Internal Modem with Dialback Security
Internal Cellular Option:	4G LTE for Verizon, AT&T or EU
Operating Temperature:	32°F - 140°F (0°C - 60°C)
Humidity:	10 - 90% RH
Size:	Height: 1.75" (4.4 cm), 1 Rack U Width: 19.00" (48.3 cm) Depth: 6.55" (16.6 cm)
Shipping Weight:	8 Lbs (3.6 Kgs)
Mounting:	19" Rack Brackets Included
Approvals:	UL, cUL, CE, FCC Class A



DSM-24-E
24 RJ45 RS232 Ports, Dual Power, Dual Ethernet



DSM-8DC
8 RJ45 RS232 Ports, -48V DC

- ✓ 5 Year Warranty
- ✓ Stocked for Same Day Shipments
- ✓ In-House Design & Manufacturing
- ✓ Made In USA



OUT-OF-BAND RESCUE™

WTI - Western Telematic, Inc.

5 Sterling • Irvine • California 92618-2517 • Toll Free (800) 854-7226 • Email: info@wti.com • Web: www.wti.com

© Copyright 2018 Western Telematic, Incorporated
DSM180518