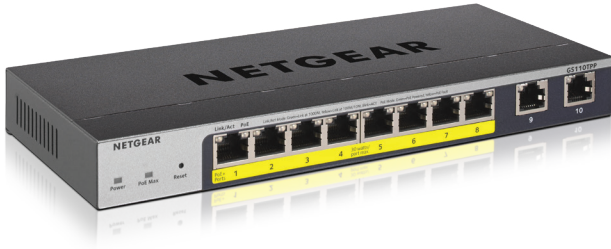


## 8-Port Gigabit PoE+ Ethernet Smart Managed Pro Switch with 2 Copper Ports and Cloud Management



### More PoE budget, More Flexible Power Options, and Remote/Cloud Management Capability



As a leading provider of network equipment for SMBs, NETGEAR keeps providing innovative networking solutions that can adapt to the business's needs of fast connectivity, network security and cost-effectiveness.

The new NETGEAR 8-Port Gigabit Smart Managed Pro switch GS110TPP provides higher PoE budget and integrates the industry leading NETGEAR FlexPoE technology, which allows users to increase the PoE budget by simply buying a new power supply, effectively futureproofing small business networks and budgets.

NETGEAR also understands the importance of easy and centralized management for business networking.

Therefore, NETGEAR now expands Cloud Management capabilities to select models within its Smart Managed Pro switch line, including this new model GS110TPP.

The GS110TPP adds full 8 port PoE+ support for deployment of modern PoE devices with 2 additional Gigabit copper ports. Each port can provide up to 30 watts with a rich total PoE power budget of 120W, perfect for deploying Wireless APs, Pan-Tilt-Zoom and fixed IP Cameras, VoIP Phones, access-limited security door locks or any other PoE-powered devices. Fanless, the GS110TPP supports completely silent desktop operation or wall mounting.

Specifically for this new Smart Managed Pro switch, additional features were added for full flexibility: Single Sign-On registration for firmware and security updates and warranty entitlement; Remote/Cloud Management capability with NETGEAR Insight™ as optional management mode. By activating the NETGEAR Insight Cloud management, the users will enable fundamental management features allowing businesses simpler configuration and deployment from anywhere using the NETGEAR Insight app from mobile devices or the Insight Cloud Portal from any device with a web browser.

# 8-Port Gigabit PoE+ Ethernet Smart Managed Pro Switch with 2 Copper Ports and Cloud Management

## Highlights

### Flexible and cost-effective solution for SMB data, voice and video converged network

- 8 Gigabit 10/100/1000BASE-T PoE+ (802.3at/802.3af) RJ-45 ports
- 2 dedicated Gigabit copper ports for uplinks or non-PoE device connection
- 120W total PoE budget (Upgradable to 190W with NETGEAR FlexPoE EPS200W power adapter)
- Non-blocking switching with 20Gbps bandwidth
- Fanless switches for silent operation in noise sensitive environment
- Flexible mounting options - desktop and wall-mounting with VESA holes (100mm)

### Powerful Connectivity and Security Features

- Layer 3 static routing with 32 routes (IPv4) for inter-VLAN local routing
- Advanced VLAN support for better network segmentation
- L2/L3/L4 access control lists (ACLs) for granular network access control including 802.1x port authentication
- Advanced per port PoE controls for remote power management of PoE connected devices including operation scheduling

- Advanced QoS (Quality of Service) for traffic prioritization including port-based, 802.1p and L2/L3/L4 DSCP-based
- Auto "denial-of-service" (DoS) prevention
- IGMP Snooping and Querier for multicast optimization
- Rate limiting and priority queuing for better bandwidth allocation
- Port mirroring for network monitoring
- Energy Efficient Ethernet (IEEE 802.3az) for maximum power savings
- Cable test to troubleshoot connection issues
- Easy-to-use Web browser-based management GUI available in English, German and Japanese
- SNMP v1, v2c, v3 and RMON remote monitoring

### Fully-integrated Cloud-manageable Devices

Remote/Cloud Management capability with NETGEAR Insight. Instantly activate NETGEAR Insight Cloud management from the Web GUI, given they subscribe to Basic (on the app, free up to 2 devices), Insight Premium (app or portal), or Insight Pro (for resellers/MSP only).

### Smart IT, not Big IT

- Easy to manage via web-Based Management GUI or Smart Control Center (Windows PC required) for multi-switch deployment
- NETGEAR Switch Discovery Tool (NSDT) to discover, register and access to the local browser interface to configure the switches
- Network Management System (NMS300), allowing all NETGEAR business products to be deployed and managed through this single interface

### NETGEAR Quality and Reliability

- Worry-free Limited Lifetime Warranty\*, online technical chat support and Next Business Day (NBD) replacement.



# 8-Port Gigabit PoE+ Ethernet Smart Managed Pro Switch with 2 Copper Ports and Cloud Management

## Hardware at a Glance

|            | FRONT               |                              |                    |                         |   | REAR                      |                                  | SIDE    |
|------------|---------------------|------------------------------|--------------------|-------------------------|---|---------------------------|----------------------------------|---------|
| Model Name | Form-Factor         | 100M/1G Copper (RJ-45) Ports | 1G Uplinks         | PoE/PoE+ Ports (Budget) | LED's   | Power Supply              | PSU Supported/ PoE Budget        | Fans    |
| GS110TPP   | Desktop, wall-mount | 8                            | 2 Dedicated Copper | 8 PoE+ (120W)           | Power (Cloud), Port Link/ Speed/Activity, PoE Max, PoE Powered, PoE Fault | External DC 54V 2.4A/3.7A | PSU: 130W/200W<br>PoE: 120W/190W | Fanless |

## Software at a Glance

| LAYER 2+ / LAYER 3 LITE FEATURES   |                       |                   |   |   |                       |  |                          |   |
|--|-----------------------|-------------------|---|---|-----------------------|--|--------------------------|---|
| Management   | IPv4/IPv6 ACL and QoS | Static Routing    | IPv4/IPv6 Multicast Filtering                           | VLANs   | Auto-VoIP, Auto-Video | IEEE (802.3az) Energy Efficient Ethernet | Convergence              | Link Aggregation/ Port Trunking                               |
| Web Browser-based GUI (HTTP/HTTPS);<br>NETGEAR Insight mobile app or Insight Cloud Portal for local or remote management from your mobile device, PC, Mac, or tablet;<br>PC-Based Smart Control Center Utility (SCC),<br>IPv4 and IPv6 management,<br>SNMP, RMON | L2, L3, L4 Ingress    | IPv4<br>32 Routes | IGMP Snooping, Querier, Fast Leave, L2 Multicast Router | Static, Dynamic, Voice, Video, 8K Max MAC (64 VLANs), Protocol based, GARP and GVRP | Yes                   | Yes                                      | LLDP-MED, RADIUS, 802.1X | LACP and Manual Static LAGs (up to 8 LAGs with max 8 members) |

## Performance at a Glance

| Model Name | Packet Buffer | CPU   | ACLs                 | MAC Address Table<br>ARP Table<br>VLANs | Fabric            | Latency (64-Byte Packet)                              | IPv4 Static Routing | Multicast IGMP Group |
|------------|---------------|---|----------------------|---|-------------------|---|---------------------|----------------------|
| GS110TPP   | 512K          | 500MHz single core<br>128MB RAM<br>32MB SPI FLASH | 100 shared (ingress) | 8K Max MAC<br>64 VLANs                  | 20 Gbps line-rate | 1G Copper: < 3.60 μs;<br>1G Uplinks Copper: < 3.60 μs | 32                  | 256                  |

# 8-Port Gigabit PoE+ Ethernet Smart Managed Pro Switch with 2 Copper Ports and Cloud Management

| <b>Features and Benefits: Hardware Features</b>   |  |
|---|--|
| Fully-integrated Cloud-manageable Devices   | Require no additional hardware (cloud keys, network portals, local servers, VPN or proxy appliances etc) to directly connect to the cloud and allow remote management. No additional hardware or software. Just switch to Insight Cloud Management mode through Web browser-based User Interface and go.               |
| 1000BASE-T Copper Ethernet and PoE+ connections   | Support high-density VoIP, Surveillance and Wi-Fi AP deployments, scalable for future growth. Never face the risk of running out of PoE ports or PoE power budget.   |
| 1000BASE-T Copper ports for Uplinks   | Two dedicated Gigabit Copper ports provide easy-to-use uplinks without transceiver, flexible to use for non-PoE device connection.   |
| Silent Acoustics  | Fanless design allows for silent operation, great for deployment in noise-sensitive environments.  |
| NETGEAR FlexPoE   | Interchangeable External Power Supply. Increase or decrease your PoE Budget as needed.   |
| Desktop and Wallmount (VESA holes available)  | Flexible deployment on desktop, wall or other location using 100mm VESA-compliant mounts.  |
| Kensington Lock Slot  | Prevent theft, removal, or tampering when used for desktop deployment.   |
| <b>Software Features</b>  |  |
| Remote setup, management, and monitoring anywhere, anytime, from your mobile device, PC, Mac, or tablet   | Locally or remotely setup, configure, manage, monitor or even troubleshoot your network from anywhere, anytime. Check network status, view dashboards for network health and activity, power cycle PoE ports, etc, and update firmware remotely. No need to be on-site, open up ports to your network, or VPN into it. |
| Auto-join and Configure (Zero-Touch Provisioning)   | Additional Insight Managed devices added to the network automatically inherit settings and configuration.  |
| Multi-site, Multi-network Single Pane-of-Glass View   | View and configure multiple networks across multiple sites, all from one single app; NETGEAR Insight.  |
| Comprehensive IPv6 Support for Management, ACLs and QoS   | Build current network with future in mind. Ensure investment protection and a smooth migration to an IPv6-based network without switch replacement.  |
| IPv4 Static Routing   | A simple way to provide segmentation of the network with internal routing through the switch - reserving the router for external traffic routing only, making the entire network more efficient.   |
| Robust security features: <ul style="list-style-type: none"> <li>• 802.1x authentication (EAP)</li> <li>• Port-based security by locked MAC</li> <li>• ACL filtering to permit or deny traffic based on MAC and IP addresses</li> </ul> | Build a secured, converged network with all types of traffic by preventing external attacks and blocking malware while allowing secure access for authorized users.  |
| Comprehensive QoS features: <ul style="list-style-type: none"> <li>• Port-based or VLAN 802.1p-based prioritization</li> <li>• Layer 3-based (DSCP) prioritization</li> <li>• Port-based egress rate limiting</li> </ul>                | Advanced controls for optimized network performance and better delivery of mission-critical traffic such as voice and video.   |

## 8-Port Gigabit PoE+ Ethernet Smart Managed Pro Switch with 2 Copper Ports and Cloud Management

| Software Features (continued)                   |   |
|---|---|
| Auto-VoIP, Auto-Voice VLAN, and Auto-Video VLAN | Automatic Voice over IP prioritization (Auto-VoIP) simplifies most complex multi-vendor IP telephone deployments either based on protocols (SIP, H.323 and SCCP) or on OUI bytes (default database and user-based OUIs) in the phone source MAC address, providing the best class of service to VoIP streams (both data and signaling) over other ordinary traffic by classifying traffic, and enabling correct egress queue configuration. Similarly, Auto-Video VLAN enables IGMP snooping to minimize broadcast streams. |
| IGMP Snooping and MLD Snooping                  | Facilitate fast receiver joins and leaves for multicast streams. Save cost and improve network efficiency by ensuring multicast traffic only reaches designated receivers without the need of an extra multicast router.  |
| Protected Ports                                 | Ensure no exchange of unicast, broadcast, or multicast traffic between the protected ports on the switch, thereby improving the security of your converged network. This allows your sensitive phone conversations to stay private and your surveillance video clips can be forwarded to their designated storage device without leakage or alteration.   |
| DHCP Snooping                                   | Ensure IP address allocation integrity by only allowing DHCP messages from trusted DHCP servers and dropping malformed DHCP messages with a port or MAC address mismatch.   |
| Dynamic VLAN Assignment (RADIUS)                | IP phones and PCs can authenticate on the same port but under different VLAN assignment policies. Users are free to move around and enjoy the same level of network access regardless of their physical location on the network.  |
| Port Trunking/Link Aggregation (LACP)           | Build up bigger bandwidth to support aggregated uplink/downlink traffic or to provide redundant link(s). Aggregate up to 8 ports for 8Gbps connections.   |
| Loop Prevention and Auto-DoS Prevention         | Detect and prevent (auto port shutdown) accidental network loops and protect against DoS attacks.   |
| Energy Efficient Ethernet (IEEE 802.3az)        | Maximum power reduction for ongoing operation cost savings.   |
| PoE Timer and Scheduling                        | Allows IT administrators to increase network security, better utilize network resources and conserve energy by scheduling or remotely controlling on/off of PoE ports.  |
| Port Mirroring and Cable Test                   | Many-to-one port mirroring for better and quicker network diagnostics and troubleshooting. Cable test easily identifies bad Ethernet cables.  |
| Dual Firmware Images                            | Dual firmware images for transparent firmware updates with minimum service interruption   |
| Firmware Updates from Cloud                     | Direct cloud-to-device firmware updates, initiated and/or scheduled using the Insight app, all from the palm of your hand, anytime, anywhere!   |

## Simply Activate NETGEAR Insight Cloud Management to manage your network. Anytime. Anywhere.

By activating the NETGEAR Insight Cloud management, the users will enable fundamental management features allowing businesses simpler configuration and deployment from anywhere using the NETGEAR Insight app from mobile devices or the Insight Cloud Portal from any device with a web browser.

Unique advanced management features of these Insight Managed devices include:

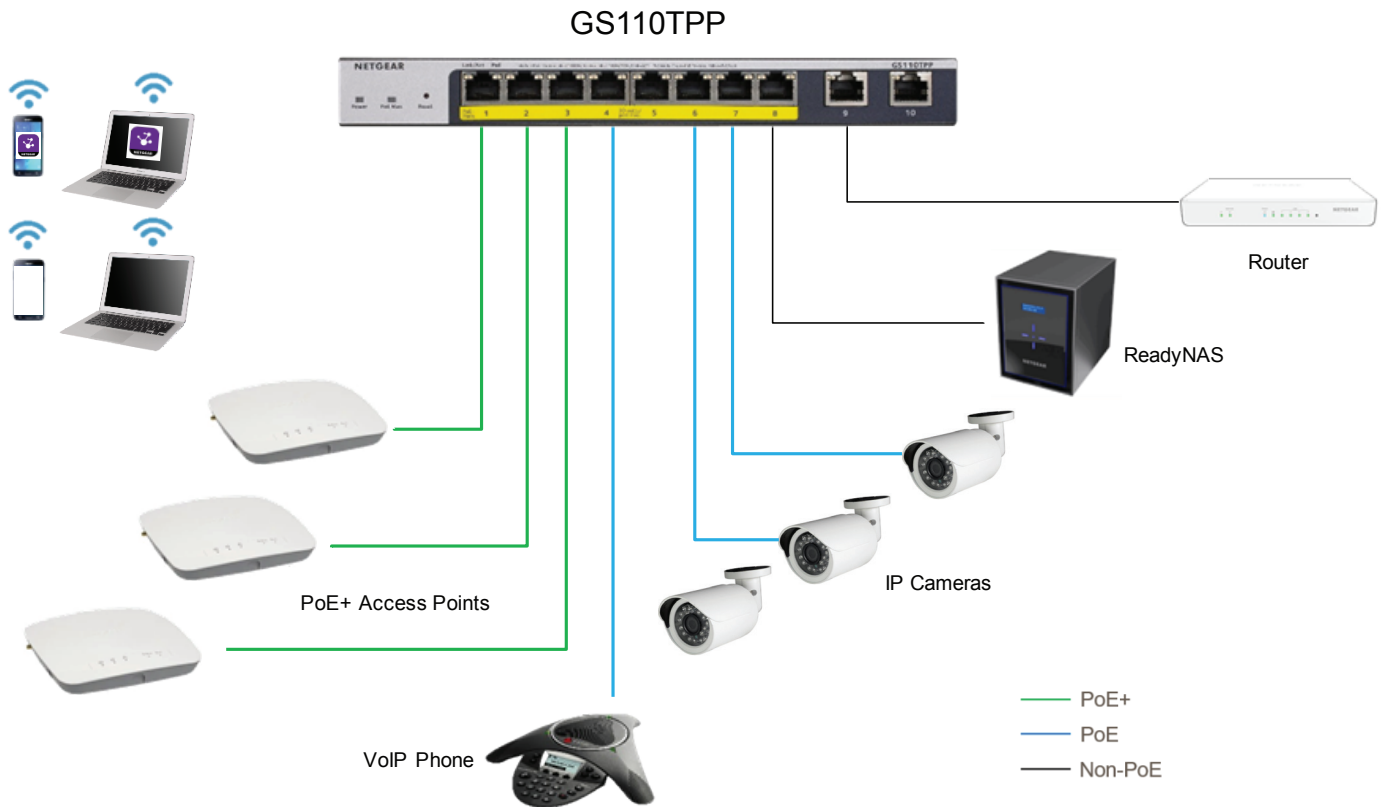
- Remote monitoring and management with performance dashboards and troubleshooting features including remote reboot, port and PoE advanced configuration including remote enable/disable/power-cycle, PoE scheduling, and firmware updates with auto-schedule mode
- Single pane-of-glass multi-device, multi-network, and multi-site remote monitoring and notifications with the NETGEAR Insight app
- Full-fledged local or remote access for configuration, management, and monitoring on a larger display using your tablet, laptop, or desktop computer through the NETGEAR Insight Cloud Portal
- Configurable in-app and email alerts and notifications
- Auto-join and configure (zero-touch provisioning) for additional Insight Managed devices added to the network
- Centralized network configuration (policies) across Insight Managed Switches, Access Points, and ReadyNAS storage for VLANs, ACLs, QoS, LAGs, etc.
- Cloud-based network administration, monitoring, and firmware management

For more information about NETGEAR Insight-manageable device settings, please see:

<https://www.netgear.com/support/product/Insight.aspx>

## Application Sample

### Power The Devices in Your Business



### GS110TPP in a Business Environment

The following table describes the PoE classes and switch allocations.

| Device Class | Standard     | Class Description    | Power Reserved by the Device | Power Delivered to the Device <sup>1</sup> |
|--------------|--------------|----------------------|------------------------------|--|
| 0            | PoE and PoE+ | Default power (full) | 15.4W                        | 0.44W-12.95W                               |
| 1            | PoE and PoE+ | Very low power       | 4.0W                         | 0.44W-3.84W                                |
| 2            | PoE and PoE+ | Low power            | 7.0W                         | 3.84W-6.49W                                |
| 3            | PoE and PoE+ | Mid power            | 15.4W                        | 6.49W-12.95W                               |
| 4            | PoE+ only    | High power           | 30.0W                        | 12.95W-25.5W                               |

<sup>1</sup> If a device receives insufficient PoE power from the switch, consider using a shorter cable.

## Accessory Power Adapters

Increase your PoE budget anytime by simply upgrading your switch Power Supply, without having to purchase a new switch. Future-proof your PoE budget with GS110TPP. This industry innovative NETGEAR FlexPoE technology makes this new switch the most adaptive in the market.

The following table describes the Accessory Power Adapters which are sold separately and compatible with GS110TPP

| Switch Model | Factory Default Power Adapter Model   | Alternative Power Adapter Model       |
|--------------|---------------------------------------|---------------------------------------|
| GS110TPP     | EPS130W (provides 120W to the switch) | EPS200W (provides 190W to the switch) |

## Warranty and Support for Accessory Power Adapters

|                            |                                   |
|----------------------------|-----------------------------------|
| Product                    | GS110TPP                          |
| Power Adapter Warranty     | 2 years                           |
| Technical Support          | 90 days of free technical support |
| ProSUPPORT Contract Option | No                                |
| Auto-applied contracts     | No                                |

## Why the NETGEAR PoE/PoE+ Switches are ideal for SMB

- Upgradable PoE budget with interchangeable power supplies
- Small form factor and silent for quiet operation
- Plug-and-play, automatic connectivity to your router or modem
- Prioritize voice and video traffic
- Lifetime Warranty\* plus lifetime online support and lifetime Next Business Day (NBD) replacement



# 8-Port Gigabit PoE+ Ethernet Smart Managed Pro Switch with 2 Copper Ports and Cloud Management

| Technical Specifications   |  | GS110TPP   |
|--|--|--|
|   |  |  |
| Gigabit Ethernet RJ-45 Copper ports (10M/100M/1G) - 1000BASE-T   |  | 8  |
| PoE/PoE+ ports   |  | 8 PoE+ (120W PoE budget)   |
| Gigabit Copper ports (100M/1G) for Uplinks   |  | 2 (dedicated)  |
| Power Supply   |  | External DC 54V 2.4A/3.7A  |
| Kensington Lock  |  | Yes (rear)   |
| <b>LEDs</b>  |  |  |
| Front (port side) (per device)   |  | Power (Cloud), PoE Max   |
| Front (port side) (per port)   |  | Speed/Link/Activity (left), PoE Power (right)  |
| <b>Unified Network Management (Discovery, Setup, Monitoring, And Management) Through NETGEAR Insight Cloud Management</b>  |  |  |
| Discovery, setup, monitoring and management  |  | NETGEAR Insight mobile app on phone or tablet; Insight Cloud Portal from PC, Mac, or tablet web browser  |
| Remote/Cloud management  |  | Anywhere, anytime, from the palm of your hand using Insight mobile app or from any PC, Mac, or tablet web browser using the Insight Cloud Portal                         |
| Centralized network configuration (policies)   |  | Centralized network configuration (policies) across Insight Managed Switches, Wireless Access Points, and Business-class ReadyNAS Storage for VLANs, ACLs, QoS, and LAGs |
| Device auto-join and configure (zero-touch provisioning)   |  | Additional Insight Managed devices added to the network automatically inherit the network configuration  |
| Multi-site, multi-network single pane-of-glass view  |  | Manage multiple sites, locations, and networks in a single view using the Insight mobile app or Insight Cloud Portal   |
| Multi-switch, multi-port concurrent configuration for ACLs, VLANs, QoS, PoE, etc   |  | Apply settings and policies on multiple ports across multiple switches all at the same time using the Port Config Wizard   |
| <b>Performance Specification</b>   |  |  |
| CPU  |  | 500MHz single core<br>128MB RAM<br>32MB SPI FLASH  |
| Packet buffer memory (Dynamically shared across only used ports)   |  | 512K   |
| Forwarding modes   |  | Store-and-forward  |
| Bandwidth (non-blocking, full duplex)  |  | 20Gbps   |
| Priority queues  |  | 8  |
| Priority queuing   |  | Weighted Round Robin (WRR) and Strict Priority   |
| MAC Address database size (48-bit MAC addresses)   |  | 8K   |
| Multicast Groups   |  | 256  |
| Number of IPv4 static routes   |  | 32   |
| Number of VLANs  |  | 64   |
| Number of DHCP snooping bindings   |  | 256  |

# 8-Port Gigabit PoE+ Ethernet Smart Managed Pro Switch with 2 Copper Ports and Cloud Management

| Performance Specification (continued)                              | GS110TPP   |
|--|--|
| Access Control Lists (ACLs)  | 100 shared for MAC, IP4 and IPv6 ACLs  |
| Packet forwarding rate (64 byte packet size)<br>(Mfps or Mpps)     | 14.8   |
| 1G Copper latency (µsec)<br>(64-byte; 1518-byte; 9216-byte frames) | 64-byte: 3.599 µsec<br>1518-byte: 3.797 µsec<br>9216-byte: 3.531 µsec  |
| Jumbo frame support  | Up to 10K packet size  |
| Acoustic noise level @ 25° C (dBA)<br>(ANSI-S10.12)                | 0 dBA (fanless)  |
| Mean Time Between Failures (MTBF) @ 25° C                          | 646,773 hrs (73.83 yrs)  |
| POE Configuration  |  |
| Number of PoE (802.3af) / PoE+ (802.3at) ports                     | 8 PoE+   |
| Total PoE power budget (watts)                                     | 120W/190W  |
| Advanced per-port PoE controls<br>(enable/disable/power limit)     | Yes  |
| Advanced per-port PoE scheduling/timers                            | Yes  |
| Dynamic PoE Budget Allocation                                      | Yes  |
| L2 Services - VLANs  |  |
| IEEE 802.1Q VLAN Tagging   | Yes  |
| Protocol-based VLANs   | Yes  |
| MAC-based VLANs  | Yes  |
| Auto-VoIP VLAN / Auto-Voice VLAN                                   | Yes, based on OUI bytes (default database and user-based OUIs) in the phone source MAC address                     |
| Auto-VoIP  | Yes, based on protocols (SIP, H.323 and SCCP). Prioritizes traffic to a higher queue.                              |
| Voice VLAN   | Yes, based on either VLAN ID or 802.1p priority, packets are passed onto the connecting VoIP phone using LLDP-MED. |
| Auto-Video VLAN  | Yes  |
| L2 Services - Availability   |  |
| Broadcast, multicast, unknown unicast storm control                | Yes  |
| IEEE 802.3ad - LAGs (LACP)   | Yes  |
| IEEE 802.3x (full duplex and flow control)                         | Yes  |
| IEEE 802.1D Spanning Tree Protocol                                 | Yes  |
| IEEE 802.1w Rapid Spanning Tree Protocol                           | Yes  |
| IEEE 802.1s Multiple Spanning Tree Protocol                        | Yes  |
| L2 Services - Multicast Filtering                                  |  |
| IGMP snooping (v1, v2 and v3)                                      | Yes  |
| MLD snooping support (v1 and v2)                                   | v1 and v2  |
| IGMP snooping queries  | Yes  |
| Block unknown multicast  | Yes  |
| Multicast groups   | 256  |

# 8-Port Gigabit PoE+ Ethernet Smart Managed Pro Switch with 2 Copper Ports and Cloud Management

| <b>L3 Services - DHCP</b>                              | <b>GS110TPP</b>                       |
|--|---------------------------------------|
| DHCP client  | Yes                                   |
| DHCP snooping  | Yes                                   |
| Number of DHCP snooping bindings                       | 256                                   |
| <b>L3 Services - Routing</b>                           |                                       |
| IPv4 static routes                                     | 32                                    |
| VLAN routing   | Yes                                   |
| Host ARP table / NDP cache (number of entries)         | 512 ARP                               |
| ICMP Router Discovery Protocol (IRDP)                  | Yes                                   |
| <b>Link Aggregation</b>                                |                                       |
| IEEE 802.3ad - LAGs (LACP)                             | Yes                                   |
| Manual Static LAG                                      | Yes                                   |
| # of Static or LACP LAGs<br># of members in each LAG   | 8 LAGs with max 8 members in each LAG |
| <b>Network Monitoring and Discovery Services</b>       |                                       |
| 802.1ab LLDP   | Yes                                   |
| LLDP-MED   | Yes                                   |
| SNMP   | Yes                                   |
| RMON group 1,2,3,9                                     | Yes                                   |
| <b>Network Security</b>                                |                                       |
| IEEE 802.1x  | Yes                                   |
| Guest VLAN   | Yes                                   |
| RADIUS-based VLAN assignment via .1x                   | Yes                                   |
| MAC-based .1x  | Yes                                   |
| MAC Authentication Bypass (MAB)                        | Yes                                   |
| RADIUS accounting                                      | Yes                                   |
| Access Control Lists (ACLs)                            | L2 / L3 / L4                          |
| IP-based ACLs (IPv4 and IPv6)                          | Yes                                   |
| MAC-based ACLs   | Yes                                   |
| TCP/UDP-based ACLs                                     | Yes                                   |
| MAC lockdown   | Yes                                   |
| MAC lockdown by the number of MACs                     | Yes                                   |
| Control MAC # Dynamic learned entries (per port)       | 4096                                  |
| Control MAC # static entries (per port)                | 48                                    |
| IEEE 802.1x RADIUS port access authentication/<br>type | Yes                                   |
| Port-based security by locked MAC addresses            | Yes                                   |
| Broadcast, multicast, unknown unicast storm control    | Yes                                   |
| DoS attacks prevention                                 | Yes                                   |
| Protected ports  | Yes                                   |

## 8-Port Gigabit PoE+ Ethernet Smart Managed Pro Switch with 2 Copper Ports and Cloud Management

| <b>Quality of Service (QoS)</b>   |  | <b>GS110TP</b>          |
|---|--|-------------------------|
| Port-based rate limiting  |  | Yes, ingress and egress |
| Port-based QoS  |  | Yes                     |
| Support for IPv6 fields   |  | Yes                     |
| DiffServ QoS  |  | Yes, ingress            |
| IEEE 802.1p COS   |  | Yes                     |
| Destination MAC and IP  |  | Yes                     |
| IPv4 and IPv6 DSCP  |  | Yes                     |
| TCP/UDP-based   |  | Yes                     |
| Weighted Round Robin (WRR)  |  | Yes                     |
| Strict priority queue technology  |  | Yes                     |
| Auto-VoIP VLAN / Auto-Voice VLAN  | Yes, based on OUI bytes (default database and user-based OUIs) in the phone source MAC address                     |                         |
| Auto-VoIP   | Yes, based on protocols (SIP, H.323 and SCCP). Prioritizes traffic to a higher queue.                              |                         |
| Voice VLAN  | Yes, based on either VLAN ID or 802.1p priority, packets are passed onto the connecting VoIP phone using LLDP-MED. |                         |
| Auto-Video VLAN   |  | Yes                     |
| <b>Other Features</b>   |  |                         |
| Loop detection & prevention   |  | Yes (both)              |
| DNS Client  |  | Yes                     |
| Option to enable/disable BPDU flooding when STP is disabled             |  | Yes                     |
| Option to enable/disable the flooding of EAPOL when 802.1x is disabled  |  | Yes                     |
| <b>Management, Monitoring &amp; Troubleshooting</b>                     |  |                         |
| Cloud/Remote management   |  | Yes                     |
| Insight mobile app & Insight Cloud Portal management                    |  | Yes                     |
| uPnP Discovery  |  | Yes                     |
| Bonjour Discovery   |  | Yes                     |
| Networking monitoring   |  | Yes                     |
| Data/performance logs   |  | Yes                     |
| Centralized network configuration/policies (network-centric management) |  | Yes                     |
| Device auto-join and configure (zero-touch provisioning)                |  | Yes                     |
| Multi-site, multi-network single pane-of-glass view                     |  | Yes                     |
| Multi-switch, multi-port concurrent configuration                       |  |                         |
| Network/global password (for all Insight Managed devices on a network)  | Yes (per network/subnet via NETGEAR Insight mobile app and Insight Cloud Portal)                                   |                         |
| Password management   |  | Yes                     |

## 8-Port Gigabit PoE+ Ethernet Smart Managed Pro Switch with 2 Copper Ports and Cloud Management

| <b>Management, Monitoring &amp; Troubleshooting (continued)</b>                | <b>GS110TP</b>                            |
|--|---|
| IP Access List   | Yes                                       |
| Configurable management VLAN   | Yes                                       |
| Admin access control via RADIUS and TACACS+                                    | Yes                                       |
| IPv6 management  | Yes                                       |
| SNTP client over UDP port 123  | Yes                                       |
| Firmware upgrade direct from Cloud (via mobile device or Insight Cloud portal) | Yes                                       |
| SNMP v1/v2c  | No  |
| SNMP v3 with multiple IP addresses   | No  |
| RMON group 1,2,3,9   | No  |
| Smart Control Center (SCC) for multi-switch management                         | N/A                                       |
| Port mirroring   | Yes                                       |
| Many-to-one port mirroring   | Yes                                       |
| Cable test utility   | Yes                                       |
| Ping and tracerout client  | Yes                                       |
| Local-only web browser-based management GUI                                    | Yes                                       |
| TLS Web-based access (version)   | Yes (v1.2)                                |
| TFTP/HTTP firmware upload/download   | Yes                                       |
| Dual software (firmware) image   | Yes                                       |
| Memory and flash log   | Yes                                       |
| Syslog (Server)  | Yes                                       |
| <b>Power Consumption</b>   |   |
| Max power (worst case, all ports used, line-rate traffic) (Watts)              | 11.3 W                                    |
| Max power (worst case, all ports used, full PoE, line-rate traffic) (Watts)    | 141.3W                                    |
| Min power (link-down standby) (Watts)  | 9W  |
| Heat Dissipation (min w/o PoE and max with full PoE) (BTU/hr)                  | Max: 482.398BTU/hr<br>Min: 30.726 BTU/hr  |
| Energy Efficient Ethernet (EEE) IEEE 802.3az                                   | Yes                                       |
| Auto power down  | Yes                                       |
| Fan(s) (temperature- and load-based speed control)                             | Fan less                                  |
| <b>Physical Specifications</b>   |   |
| Dimensions (W x D x H)   | 236 x 101 x 27 mm ( 9.3 x 4.0 x 1.1 in)   |
| Weight   | 0.64kg ( 1.41 lb)                         |
| Mounting options   | Desktop, wallmount, VESA-standard (100mm) |

# 8-Port Gigabit PoE+ Ethernet Smart Managed Pro Switch with 2 Copper Ports and Cloud Management

| Environmental Specifications           | GS110TP   |
|--|---|
| <b>Operating</b>                       |   |
| Operating Temperature                  | 0° to 40°C (32° to 104°F)   |
| Humidity                               | 95% maximum relative humidity (RH), non-condensing  |
| Altitude                               | 10,000 ft (3,000 m) maximum   |
| <b>Storage</b>                         |   |
| Storage Temperature                    | -20° to 70°C (-4° to 158°F)   |
| Humidity (relative)                    | 95% maximum relative humidity (RH), non-condensing  |
| Altitude                               | 10,000 ft (3,000 m) maximum   |
| <b>Warranty and Support</b>            |   |
| Hardware Limited Warranty              | Limited LIFETIME (switch, except for India, China)<br>5-year Warranty (India, China)<br>2 years (power adapter) |
| Next-Business-Day (NBD) Replacement    | Limited LIFETIME (except for India, China)<br>5-year NBD Replacement (India)                                    |
| Technical support via phone            | 90 days free from date of purchase* (except for China)  |
| 24x7 Online Chat Technical support     | Limited LIFETIME (except for China)   |
| ProSUPPORT OnCall 24x7 Service Packs** | Category 1:<br>PMB0312-10000S<br>PMB0332-10000S<br>PMB0352-10000S   |
| <b>Ordering Information</b>            |   |
| GS110TPP-100NAS                        | North America and Latin America   |
| GS110TPP-100EUS                        | Europe  |
| GS110TPP-100AJS                        | Asia Pacific  |
| GS110TPP-100INS                        | India   |

\*This product comes with a limited warranty that is valid only if purchased from a NETGEAR authorized reseller, and covers unmodified hardware, fans and internal power supplies - not software or external power supplies, and requires product registration at <https://www.netgear.com/business/registration> within 90 days of purchase; see <https://www.netgear.com/about/warranty> for details. Intended for indoor use only.

\*\*The NETGEAR OnCall 24x7 contract provides unlimited phone, chat and email technical support for your networking product.

NETGEAR and the NETGEAR Logo are trademarks of NETGEAR, Inc. in the United States and/or other countries. Other brand names mentioned herein are for identification purposes only and may be trademarks of their respective holder(s). Information is subject to change without notice. ©NETGEAR, Inc. All Rights reserved.

NETGEAR, Inc. 350 E. Plumeria Drive, San Jose, CA 95134-1911 USA, 1-888-NETGEAR (638-4327), E-mail: [info@NETGEAR.com](mailto:info@NETGEAR.com), [www.NETGEAR.com](http://www.NETGEAR.com)

DS-GS110TPP-29May19



**REPRESENTADO EN MÉXICO POR TELSA MAYORISTA**

Oriente 65A No. 2848, Asturias, Cuauhtémoc, 06850, CDMX, México  
 Tels.: +52 (55) 5740 2142 / 5740 0606 • [ventas@telsa.com.mx](mailto:ventas@telsa.com.mx) • [www.telsa.com.mx](http://www.telsa.com.mx)  
 Síguenos en: [Twitter.com/TelsaMayorista](https://twitter.com/TelsaMayorista) • [Facebook.com/TelsaMexico](https://facebook.com/TelsaMexico)



Contáctanos: