

# 360° Panoramic H.265+ Fisheye Network Camera



IP67

IK10

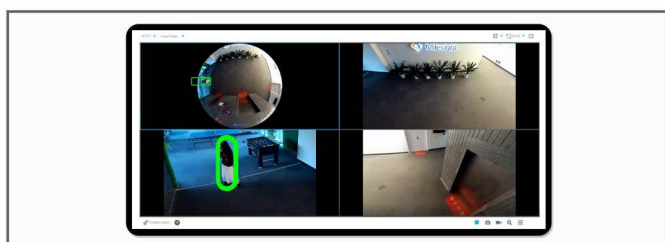
DATASHEET

## KEY FEATURES

- ▶ **5/12MP Ultra High Resolution** (Capturing images of the entire area with superb clarity and finest details.)
- ▶ **On-board/Client-side Dewarping** (Two ways of dewarping to bring users great flexibility during operation.)
- ▶ **Multi-interface** (Easy installation with built-in Microphone, Audio I/O, Alarm I/O and DC12V.)
- ▶ **Smart IR II Technology** (Combining the High Beam and Low Beam to adjust IR intensity to fit different lighting conditions.)
- ▶ **120dB Super WDR** (Excellent performance even when the ratio of the luminosity of brightest and darkest is up to 120dB.)
- ▶ **256G** (Supporting ultra-large external microSD/SDHC/SDXC card storage up to 256G.)
- ▶ **Video Content Analysis** (With 10 detection modes, VCA greatly enhances the performance bringing comprehensive surveillance functions.)
- ▶ **Smart Stream** (Bandwidth, storage and bit rate are saved with Smart Stream On, e.g. H.265+ saves 70%~80% bandwidth that of H.264.)

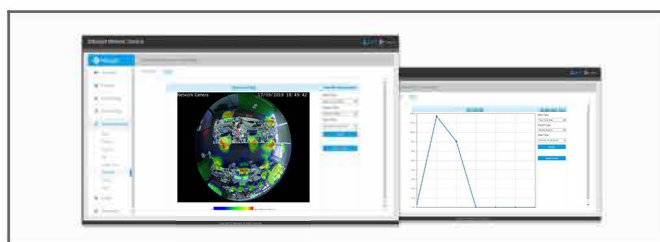
## Fisheye Auto Tracking

The algorithm-based Fisheye Auto Tracking enables the Fisheye Camera to leverage digital PTZ to better safeguard the monitored area from overall to partition. When moving object is detected in the view, the Original view or Panoramic view will display the whole view, while other Regional views will cooperate with the linkage to track the details.



## Advanced Heat Map

Applied in panoramic cameras, the Advanced Heat Map is used for the statistics of popularity in surveillance zones. Featuring various detailed configurations and intuitive Time/Space pattern, it visualizes visitor behavior which would greatly help the business intelligent management for smarter retail solutions.



## Two Kinds of Compatible Modes

Milesight Fisheye Camera offers Bundle-Stream Mode and Multi-Channel Mode to meet different needs. The Bundle-Stream Mode combines all the channels into one and sends to NVR or VMS, which is easy for compatibility. The Multi-Channel Mode sends all the original channels to NVR or VMS, so the channels can be modified separately.



## Exquisite Design

The body design of the camera insists on the idea of neatness and exquisiteness. As a whole, the screw-free design and Multiple-interface Cable keep the body neat. The Power Supply Board replaced the traditional way of power supply with cable which freeing interior space, making the camera an art of surveillance inside and out.



# 360° Panoramic H.265<sup>+</sup> Fisheye Network Camera



	Model	MS-C5374-PB (5MP)	MS-C9674-PB (12MP)
Camera	Image Sensor	1/2.8" Progressive Scan CMOS	1/1.7" Progressive Scan CMOS
	Min. Illumination	Color: 0.005Lux@F1.2 Color: 0.008Lux@F2.0 B/W: 0Lux with IR on	Color: 0.01Lux@F1.2 Color: 0.05Lux@F2.8 B/W: 0Lux with IR on
	WDR	120dB Super WDR	
	Lens	1.25mm@F2.0	1.98mm@F2.8
	Mount	M12	
	Field of View	Ceiling Mount: 360°; Wall Mount: 180°; Flat Mount: 360°	
	Shutter Time	1/100000s~1s	
	IR Distance	Up to 15m	
	Day/Night Mode	Day/Night/Auto/Customize/Schedule	
	S/N	>55dB	
Video	Max.Image Resolution	2592x1944	4000x3000
	Primary Stream	Fisheye View: 30fps@(2592x1944, 1944x1944, 1536x1536, 1280x1280)	Fisheye View: 25fps@(4000x3000), 30fps@(3000x3000, 2560x2560, 1920x1920, 1280x1280)
	Secondary Stream	Fisheye View: 30fps@(1280x960, 1024x1024, 720x720, 320x320)	
	Video Compression	H.265 <sup>+</sup> /H.265(HEVC)/H.264 <sup>+</sup> /H.264	
	Video Bit Rate	16Kbps~16Mbps(CBR/VBR Adjustable)	
	Privacy Masking	Up to 8 areas	
	ROI	Up to 8 areas	
	Image Setting	Brightness/Contrast/Saturation/Sharpness	
Display	Mount Mode	Ceiling Mount/Wall Mount/Flat Mount	
	Decoding Mode	On-board Dewarping/Client-side Dewarping	
	Display Mode	<b>11 display modes in total</b> <b>Client-side Dewarping:</b> Ceiling Mount: 1O, 1P, 2P, 4R, 1O3R, 1P1R, 1P4R, 1P6R, 1O8R Wall Mount: 1O, 1P, 4R, 1O3R, 1P1R, 1P4R Table Mount: 1O, 1P, 2P, 4R, 1O3R, 1P1R, 1P4R, 1P6R, 1O8R <b>On-board Dewarping:</b> Ceiling Mount: 1O, 1P, 2P, 4R, 1O3R, 1P3R, 1O1P3R Wall Mount: 1O, 1P, 4R, 1O3R, 1P3R, 1O1P3R Table Mount: 1O, 1P, 2P, 4R, 1O3R, 1P3R, 1O1P3R  Note: 1. Only Fisheye in Multi-Channel Mode supports 1O1P3R. 2. The above letters O, P and R are explained as follows: O----Fisheye View; P----180° Panoramic View; 2P----2*180° Panoramic View; R----PTZ	
Interface	Ethernet	1*RJ45 10M/100M Ethernet Port	1*RJ45 10M/100M/1000M Ethernet Port
	Audio I/O	Built-in Microphone	Built-in Microphone and Audio Input/Output interface
	Alarm I/O	N/A	1/1
Network	Network Storage	NAS(Support NFS, SMB/CIFS), ANR	
	Protocol	IPv4/IPv6, ARP, TCP, UDP, RTCP, RTP, RTSP, RTMP, HTTP, HTTPS, DNS, DDNS, DHCP, FTP, NTP, SMTP, SNMP, UPnP, Bonjour, SIP, PPPoE, VLAN, 802.1x, QoS, IGMP, ICMP, SSL	
Audio	Audio Compression	G.711/AAC/G.722/G.726	
	Audio Sampling Rate	8/16/32/48KHz	
	Audio Bit Rate	16~256kbps	
	Two-way Audio	N/A	Support

# 360° Panoramic H.265<sup>+</sup> Fisheye Network Camera

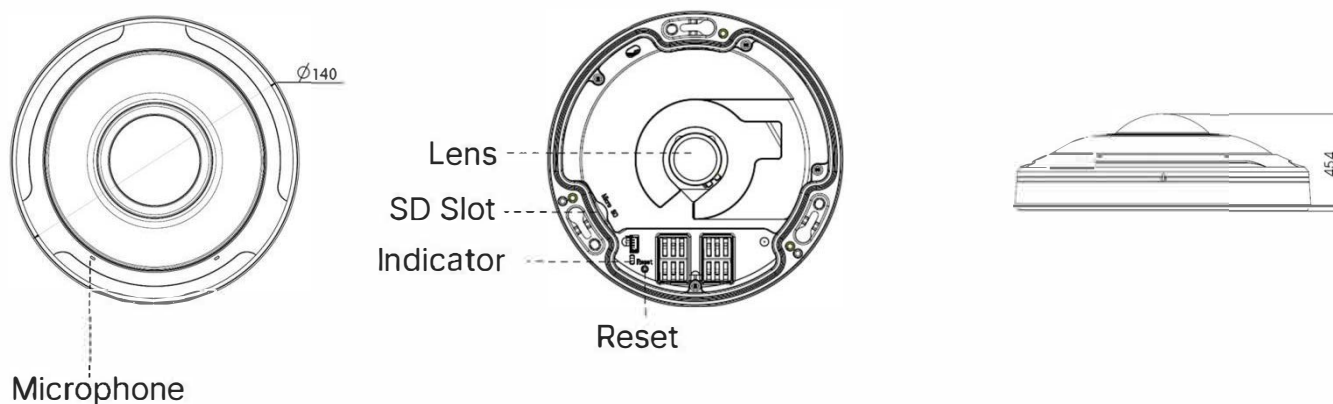


<b>System</b>	Storage	Support microSD/SDHC/SDXC Card Local Storage, up to 256G	
	Advanced Function	Auto Tracking, Heat Map, BLC, HLC, 2D DNR, 3D DNR, Defog, AWB, EIS, IP Address Filtering, AGC, Anti-flicker, Corridor Mode, Deblur, Watermark	
	SIP/VoIP Support	Yes, Voice & Video-over-IP	
	Event Trigger	Motion Detection, Network Disconnection, Audio Alarm, etc.	Motion Detection, Network Disconnection, Audio Alarm, External Input, etc.
	Event Action	FTP Upload, SMTP Upload, SD Card Record, SIP Phone, HTTP Notification, etc.	FTP Upload, SMTP Upload, SD Card Record, External Output, SIP Phone, HTTP Notification, etc.
	Video Analysis	Region Entrance, Region Exiting, Advanced Motion Detection, Tamper Detection, Line Crossing, Loitering, Human Detection, People Counting, Object Left, Object Removed	
	System Compatibility	ONVIF Profile G & Q & S & T, API	
<b>General</b>	Working Temperature	-40°C~60°C	
	Working Humidity	0~90%(Non-condensing)	
	Power Supply	PoE (802.3af) / DC 12V±10%	
	Power Consumption	4.2W MAX 6.6W MAX (With IR on)	4.8W MAX 8W MAX (With IR on)
	Housing	Vandal-proof IK10-rated Metal Housing / Up to IP67-rated for Weather-resistant Performance	
	Weight	1100g	
	Dimensions	Φ140mmX45.4mm	
	Warranty	3/5 Years	

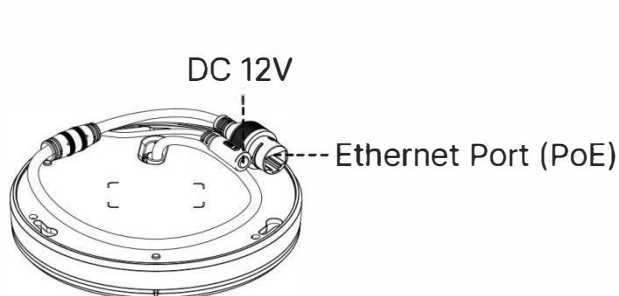
# 360° Panoramic H.265+ Fisheye Network Camera



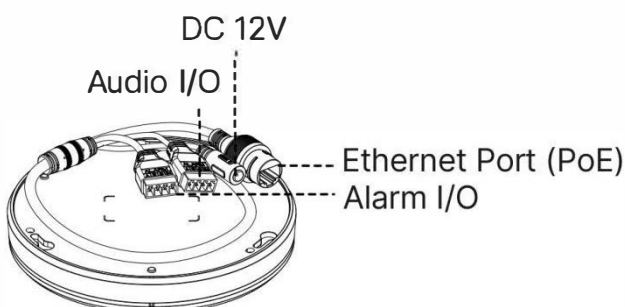
## Structure Diagrams



## 5MP Fisheye Camera



## 12MP Fisheye Camera



Units: mm

## Accessories Support

### A01 Pole Mount

Weight: 720g  
Dimensions: 170\*51.5\*152.6mm



### A03 External Corner Bracket

Weight: 900g  
Dimensions: 170\*152.5\*76.3mm



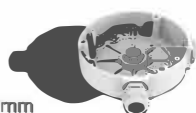
### A72 Wall Mount

Weight: 560g  
Dimensions: 240\*160\*136mm



### A75 Junction Box

Weight: 200g  
Dimensions: 145\*167\*33.5mm



### A76 Pendant Mount

Weight: 620g  
Dimensions: 136\*L (L is default as 300mm, also can be extended with A76-L)



### A76L Extension Lever

Weight: 315g  
Dimensions: 34\*300mm

