

**QNAP**

4-bay NAS

# TS-451D2



Featuring an Intel Celeron J4025 dual-core CPU and 2x GbE ports as a storage for smart home

# Need for a large storage space for increasing amount of video and work files

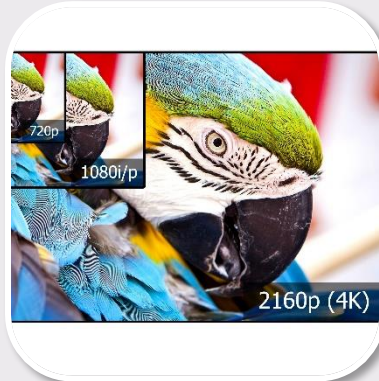


**Able to store many types of files**



**Important files on tablet and phone**

**Lossless storage of photos and videos for the best memories**

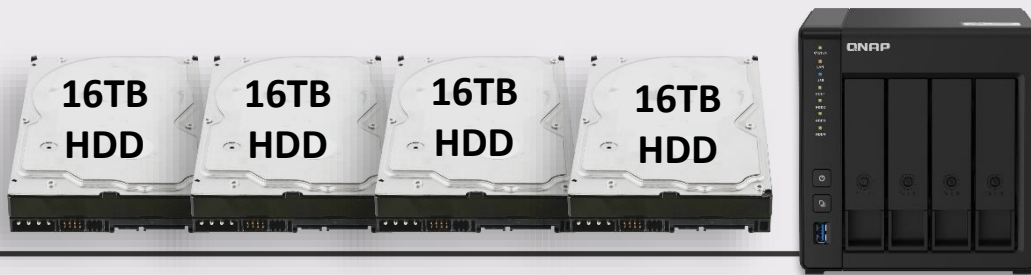


**Secure and reliable RAID data protection and anti-virus / anti-hacker**



# 4-bay TS-451D2 with up to 64TB capacity

	Min. # of Disks	4 x 16TB disk capacity	Speed	Data redundancy/protection when disk fails
JBOD	1	64 TB (combined)	★★	Partial (accessible if on undamaged disks)
RAID 0	2	64TB (combined)	★★★★★	none
RAID 1	2	2 x 16TB (smallest capacity), Supports dual RAID 1 volumes	★	Allows 1 disk failure
RAID 5	3	48TB [smallest capacity x (n-1)]	★★★★	Allows 1 disk failure
RAID 6	4	32TB [smallest capacity x (n-2)]	★★★	Allows 2 disks failure
RAID 10	4	32TB [smallest capacity x (n/2)]	★★★★	Allows 2 disks failure (Each of the RAID 1 group allows 1 disk failure)



# Intel Celeron J4025 dual-core 2.0GHz SoC

## Power-efficient x86 Multimedia NAS



Dual-core **J4025**

Code name:

Gemini Lake Refresh

**2.0**GHz

Base

**2.9**GHz

Burst

**NAS models:**

**TS-451D2-2G**

2 GB RAM (1 x **2 GB**)

**TS-451D2-4G**

4 GB RAM (1 x **4 GB**)



# 4-bay TS-451D2 front view

**LED indicators:**  
Status, LAN, USB

**Disk LED indicators:**  
Disk 1~4

**Power button**

**Copy button**

**USB 3.2 Gen 1 port**



**4 x 3.5" / 2.5"**  
**SATA 6Gb/s**  
**HDD/SSD bay**



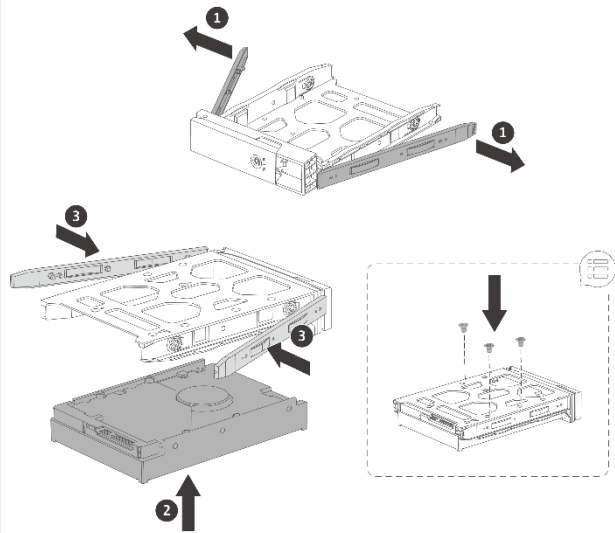
**Includes 2 keys for locking the trays**



# Intuitive HDD and SSD installations

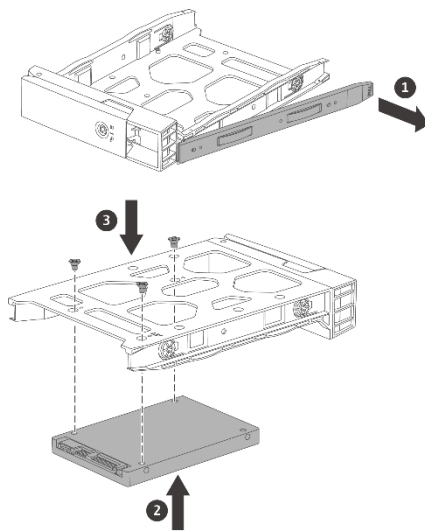
01

3.5-inch HDD



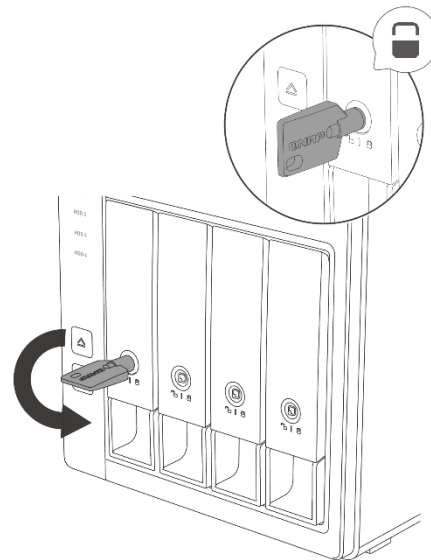
3.5-inch HDD: tool-less installation

2.5-inch HDD / SSD



2.5-inch HDD/SSD: use a screwdriver

02



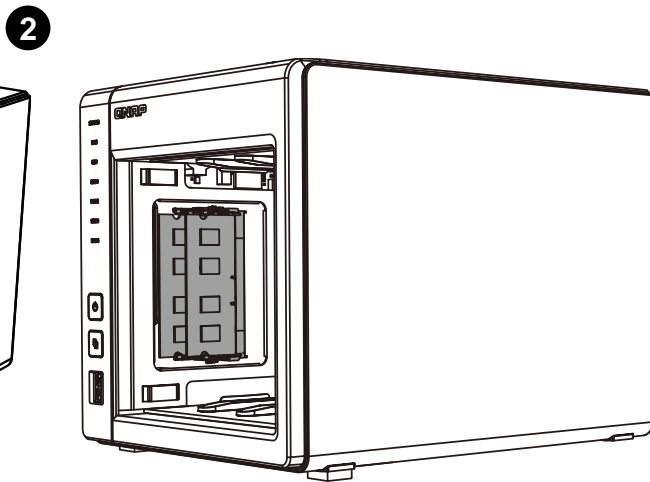
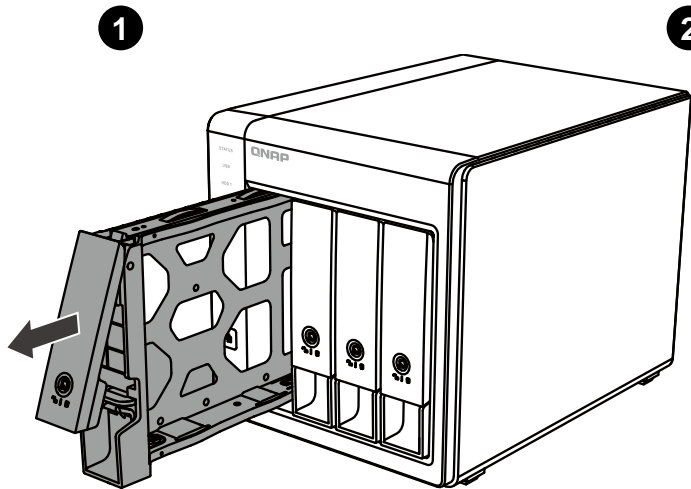
# Effortless RAM Upgrade to 8GB



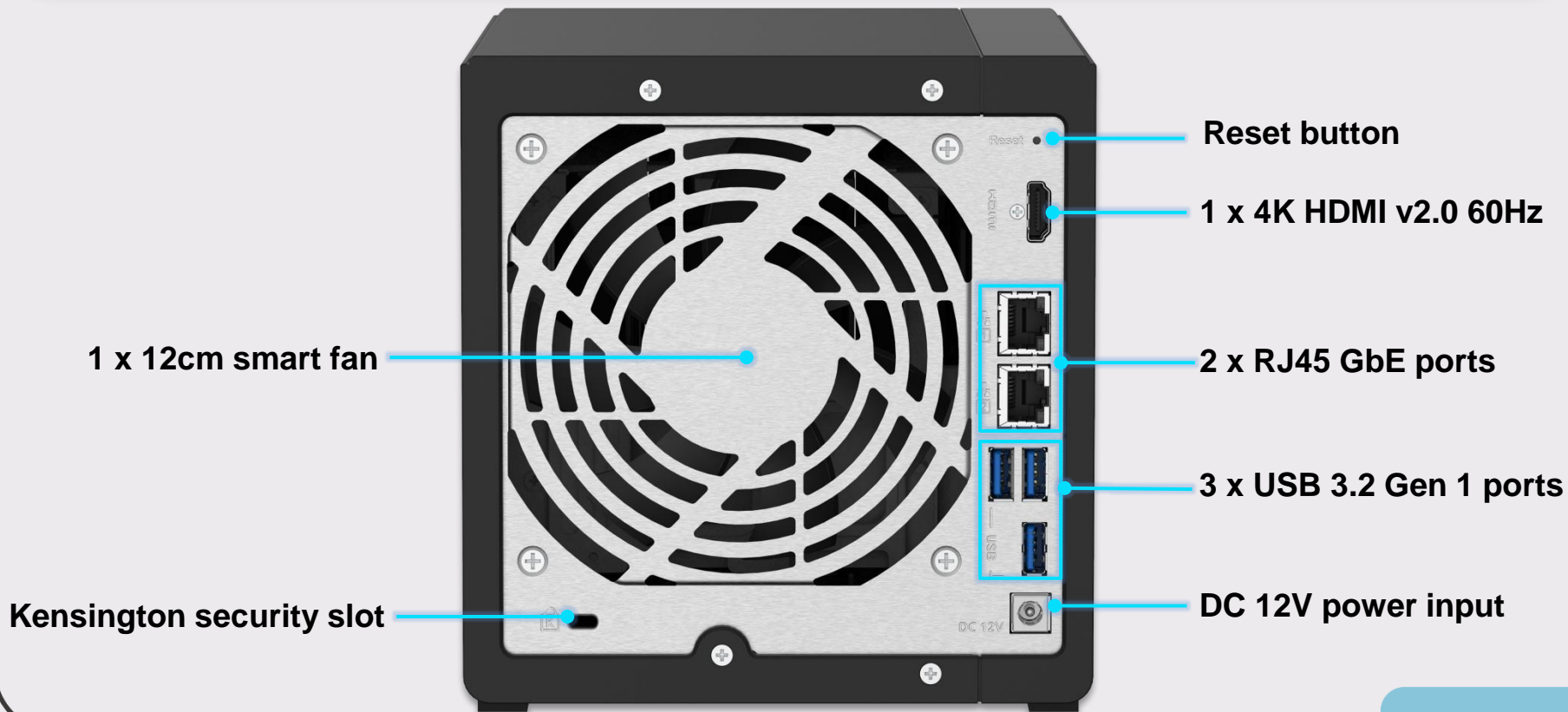
## Dual-channel memory

2 x DDR4 SO-DIMM slots,  
total 8 GB (2 x 4 GB)

✓ Optional 2GB and 4GB  
memory upgrade modules



# 4-bay TS-451D2 rear view



# Use QNAP NAS to build your personal cloud

Due to COVID-19, people continue to work from home. NAS allows you to access and share the data anytime and anywhere with an Internet connection. NAS can even connect to the public cloud or your company's private cloud and lets you access the data with a computer, iOS, or Android app.



**Cloud  
Storage  
Gateway**



**Cloud  
Storage  
Mount**



**Cloud  
Backup**



**1 | Upload**



**Mapped Drive**



**Direct Connect**



**2 | Edit**



**Mapped Drive**



**3 | Backup**



**USB Drive**



**QNAP NAS**



**Cloud**



**4 | Share**



**Friends**



**Family**



**Workgroup**



**Clients**





# QuMagie smart albums and accelerated AI classification

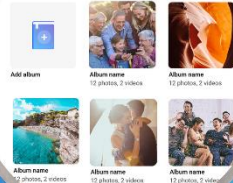
Organize photos with similar faces using facial recognition

Classify photos into 400 different themes using Subject Detection:  
People, tags, dates, events, etc.



## Album view

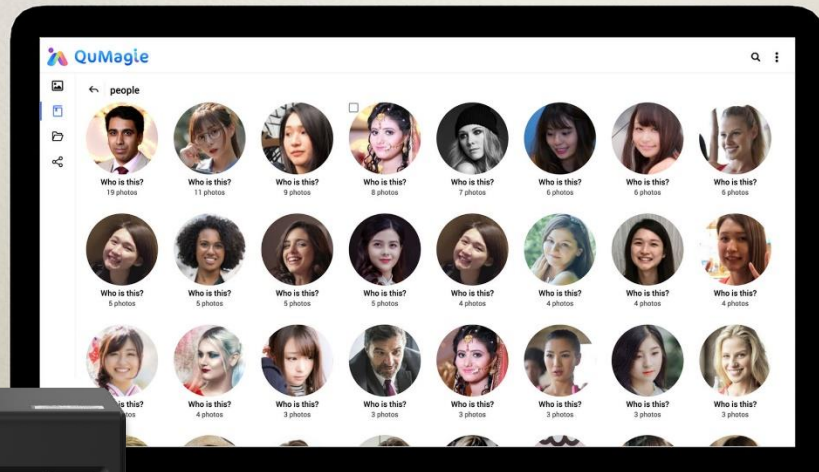
Albums



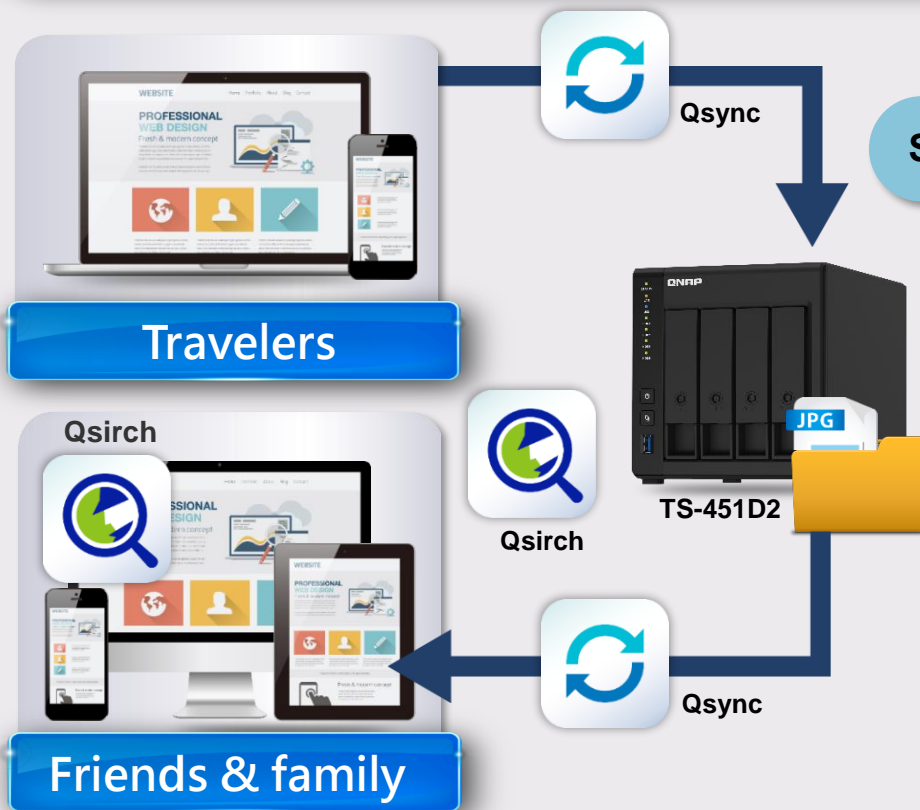
## Folder View



TS-451D2



# Use Qsync to organize and share daily photos



## Synchronize data with NAS and devices in real-time

- Travel photos and videos sync to NAS via Qsync
- Use Qfiling to archive files
- Cross-platform device synchronization (Editing photos and videos, writing a travel blog, displaying high-resolution photo movies on the PC platform)
- Use Qsirch to search for photos and videos
- Share with other friends

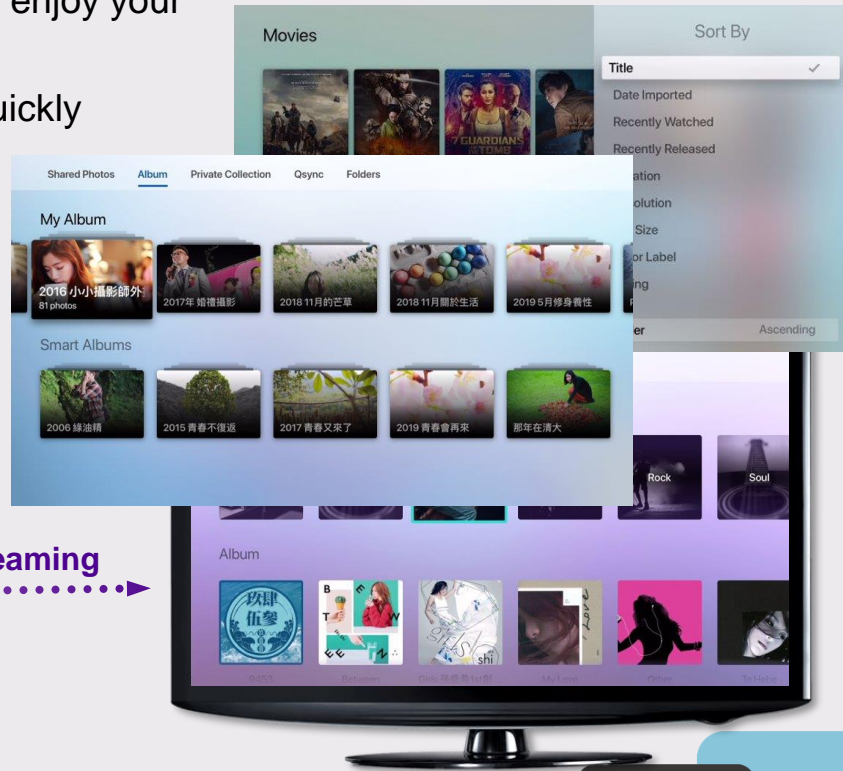
# Stream files to Apple TV, Fire TV, Android TV, Roku

- Use the remote control of your media player to navigate
- Categorization and multiple sorting methods to enjoy your media content
- Filters and keyword searches to locate a file quickly



Airplay, DLNA, network streaming

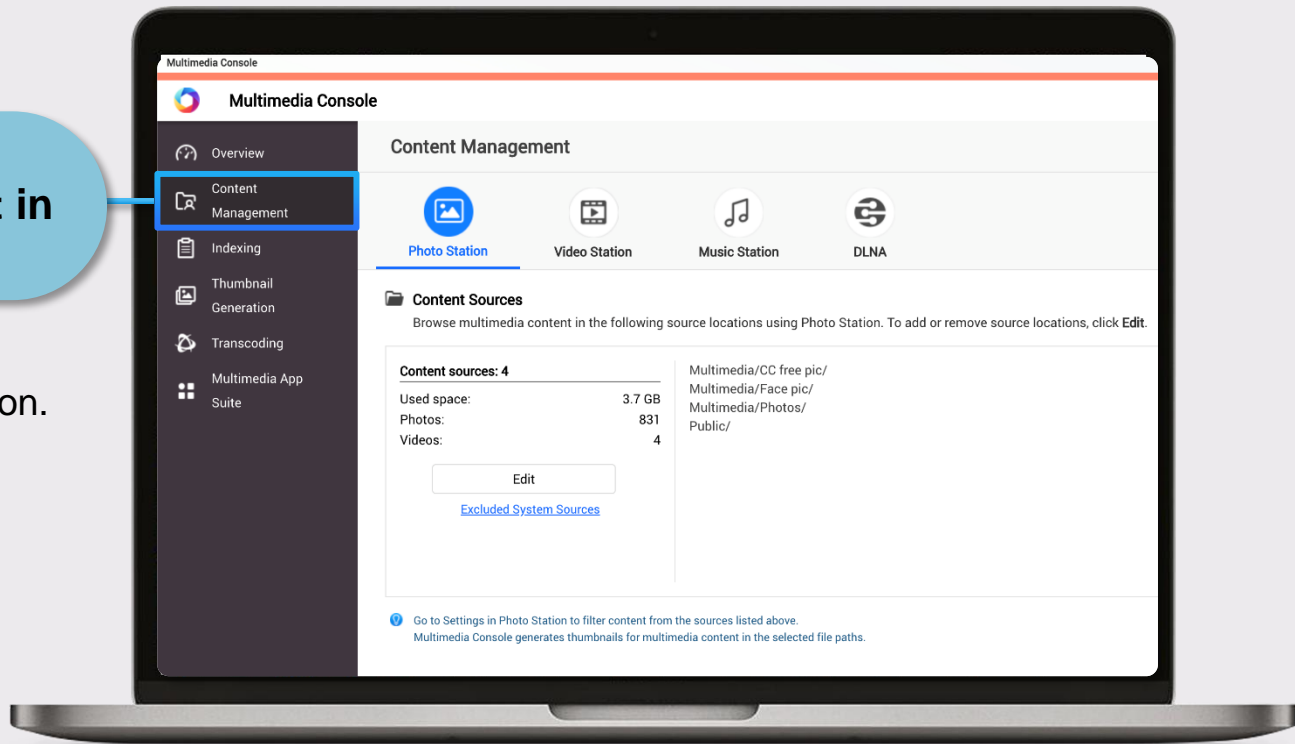
TS-451D2



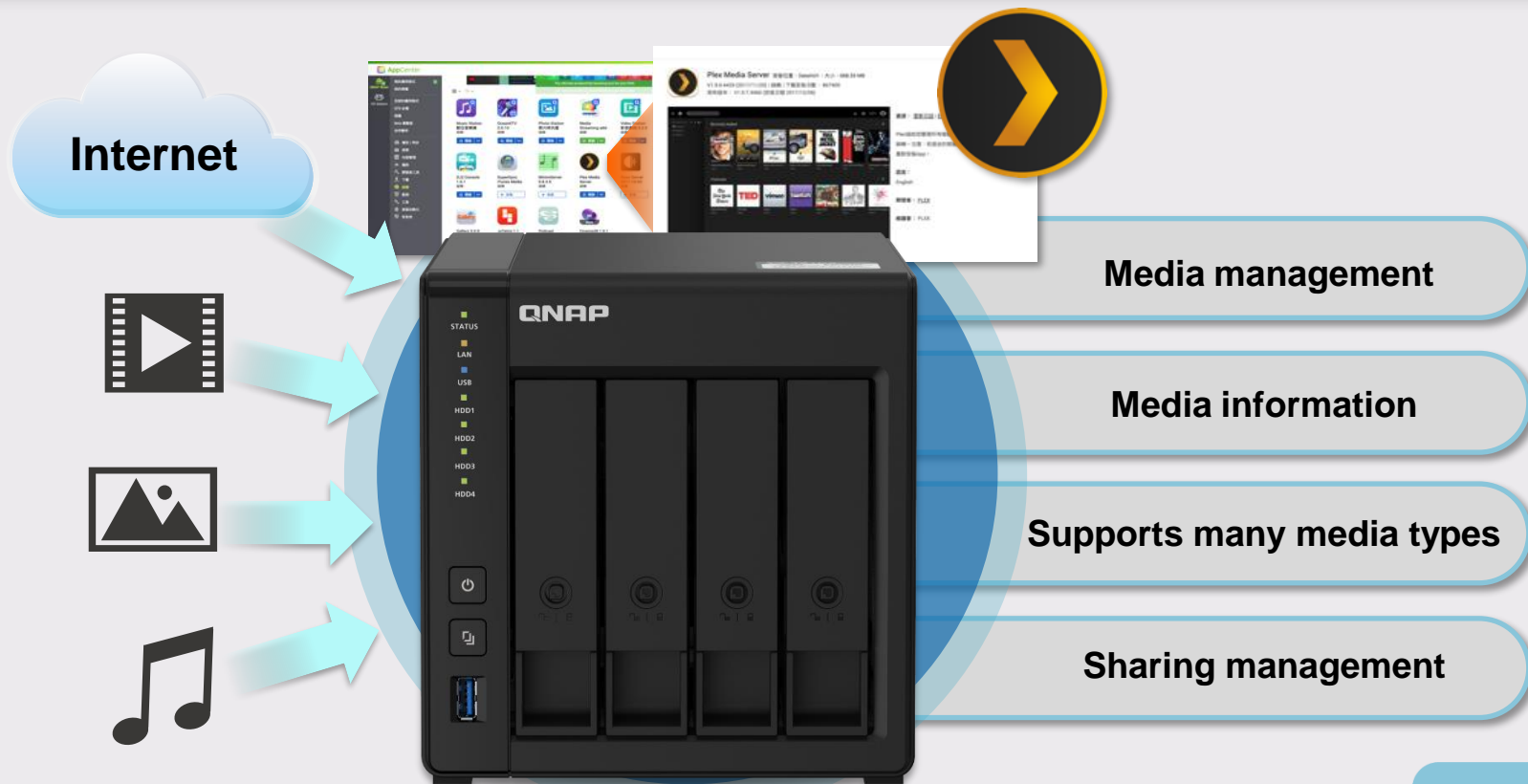
# Set content sources for all multimedia applications

**Go to  
Content Management in  
Multimedia Console**

Assign folders as content  
sources for each application.



# Enjoy the content with Plex Media Server





# Full multimedia experience over competitors



**4K HDMI v2.0 60Hz output**



**Up to 2-ch 4K real-time transcoding**



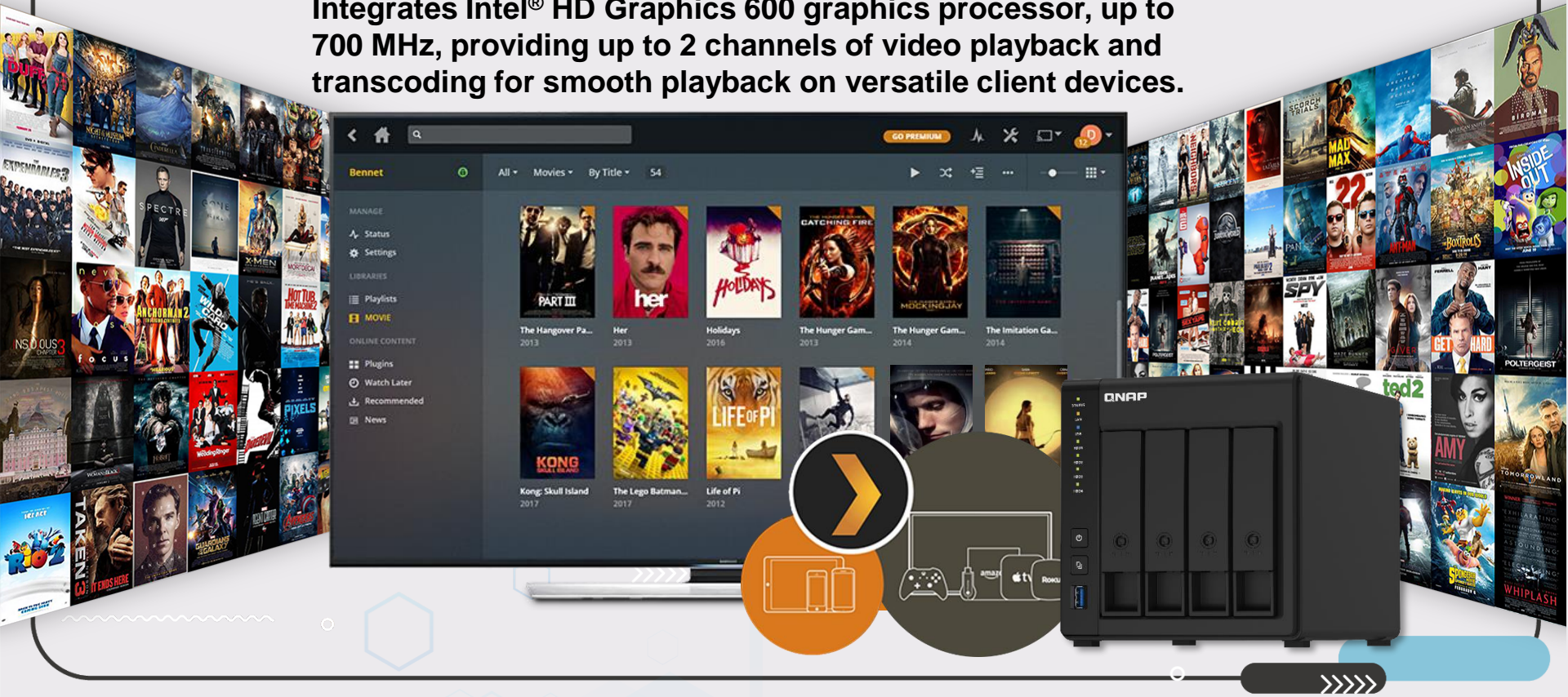
**Use Cinema28 for multi-room streaming**

**Supports USB Keyboard and mouse**



# Up to 4K video real-time transcoding

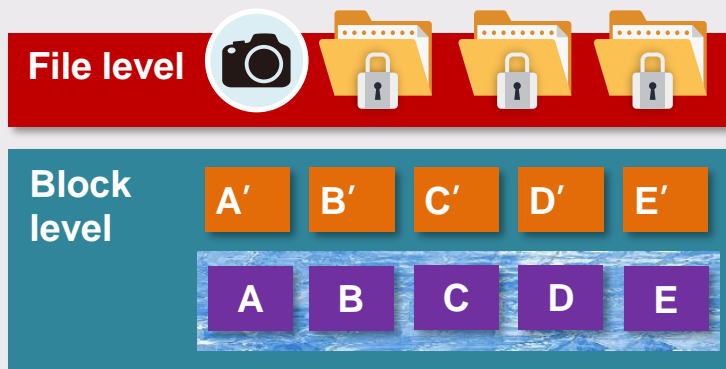
Integrates Intel® HD Graphics 600 graphics processor, up to 700 MHz, providing up to 2 channels of video playback and transcoding for smooth playback on versatile client devices.



# QNAP snapshot features for file recovery

1. Fully supports all storage configurations at the storage pool level.
2. Easily take, manage and restore snapshots.
3. Using the mature Ext4 file system for “out of volume” snapshots

RAM Size	NAS SKU	Maximum Total Snapshot Numbers	Maximum Snapshot Numbers per Volume/LUN
2GB	TS-451D2-2G	64	32
4GB and more	TS-451D2-4G	1024	256



# macOS Time Machine backup for multiple users

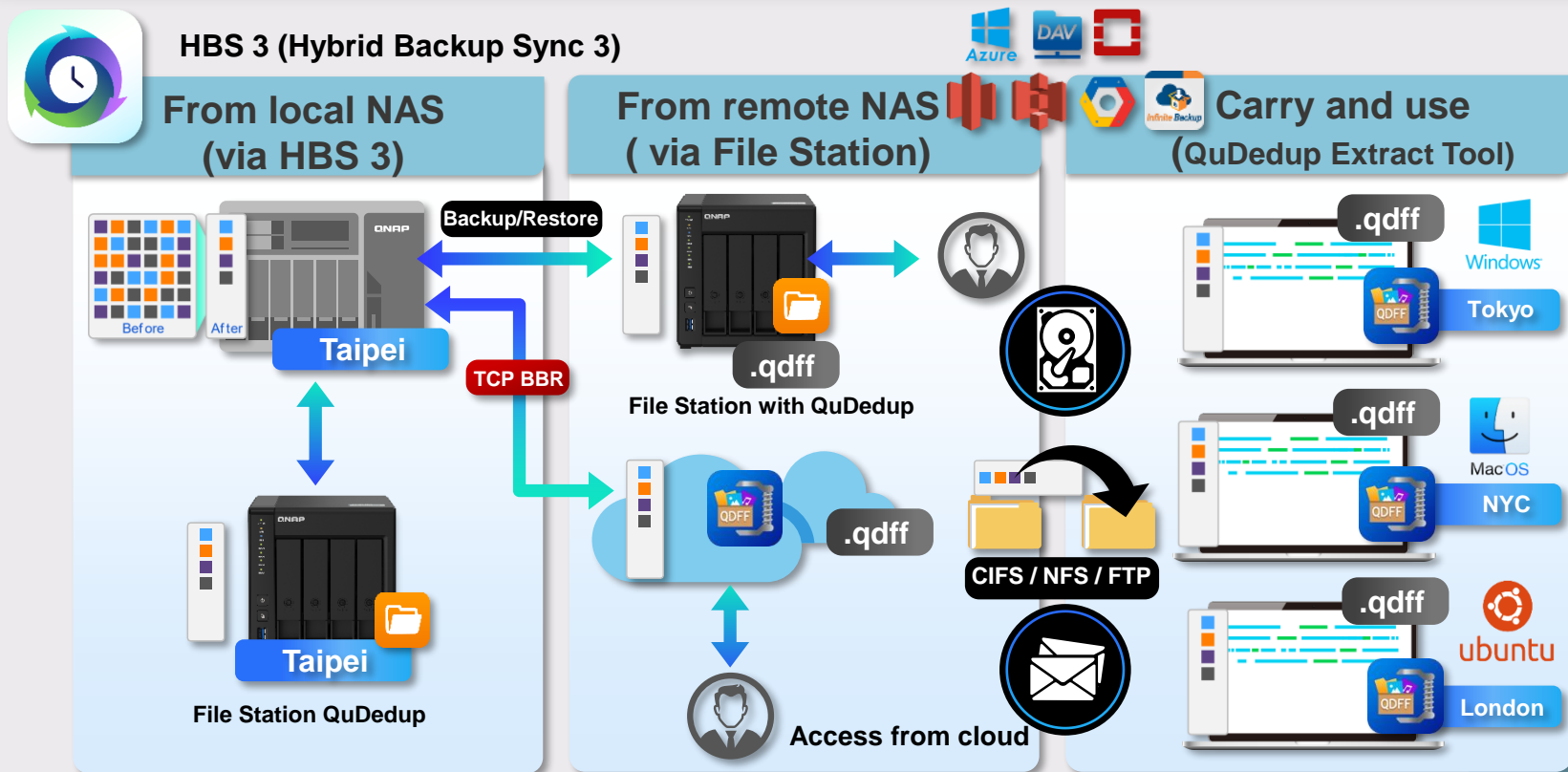
Use HBS 3 (Hybrid Backup Sync 3) to backup the data from mac to NAS via Time Machine. And then backup the NAS data to an external enclosure.



Create the backup job:

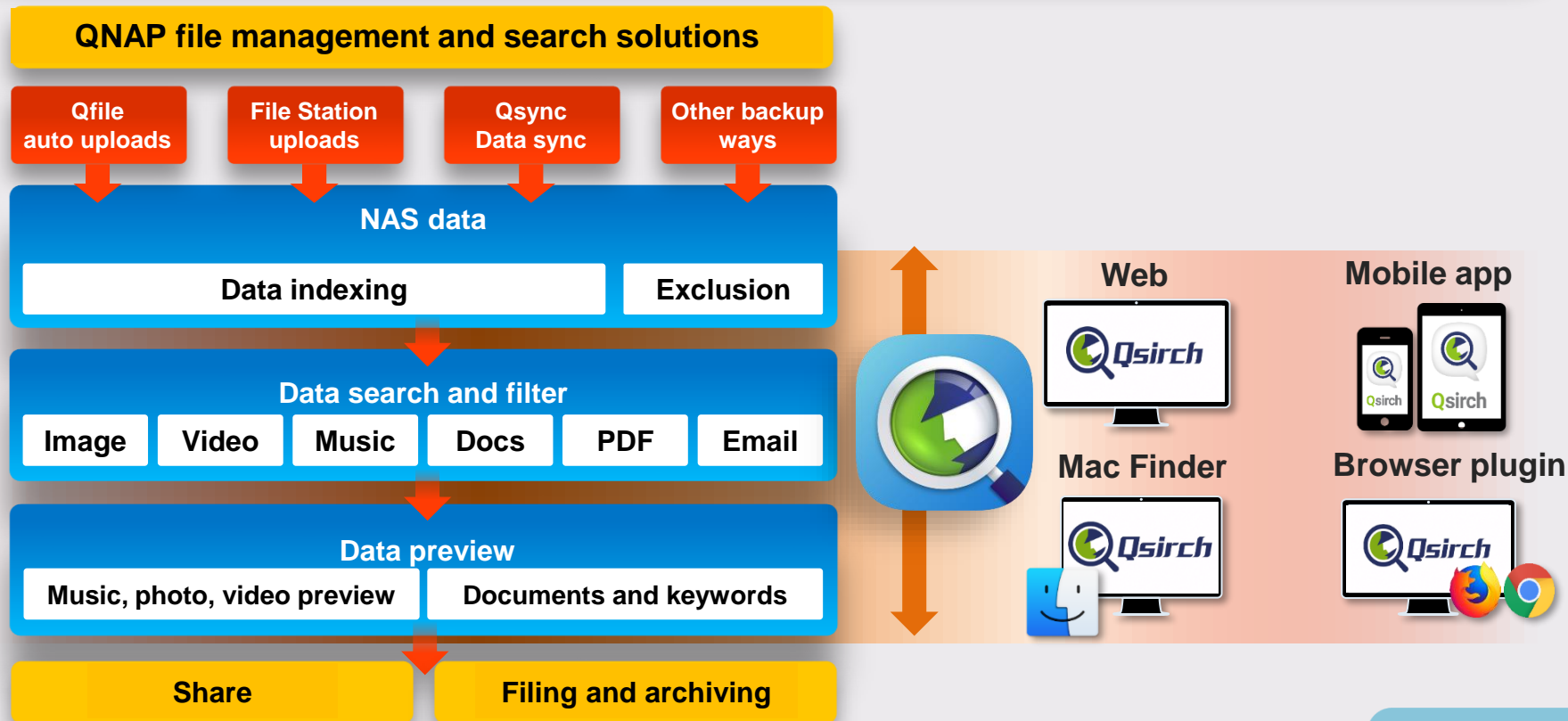
- 1** Select Time Machine Backup as the source
- 2** Select TR-004 as the destination
- 3** - Setup the schedule  
- Enable QuDedup

# Backup data with deduplication





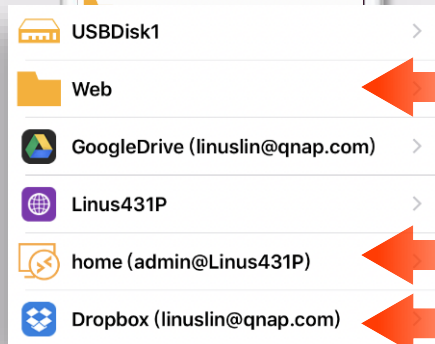
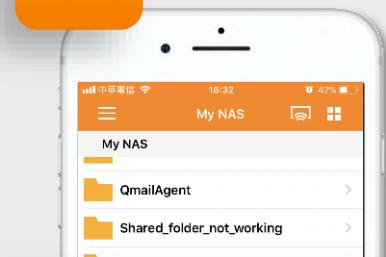
# Qsirch 5.0 for NAS advanced file search & management



# Connect to Dropbox, OneDrive, Google Drive and more



Qfile



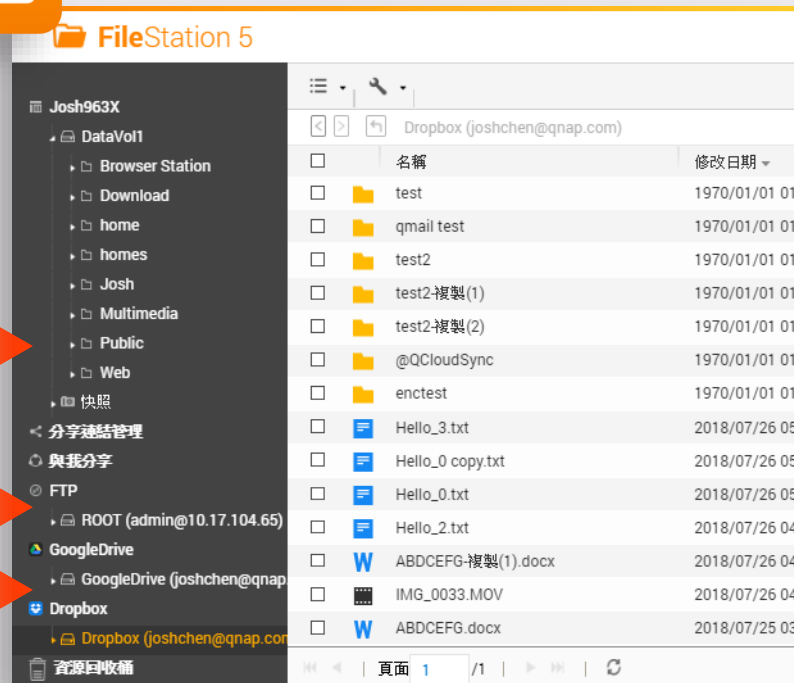
Local  
NAS

Remote  
NAS

Cloud  
Storage



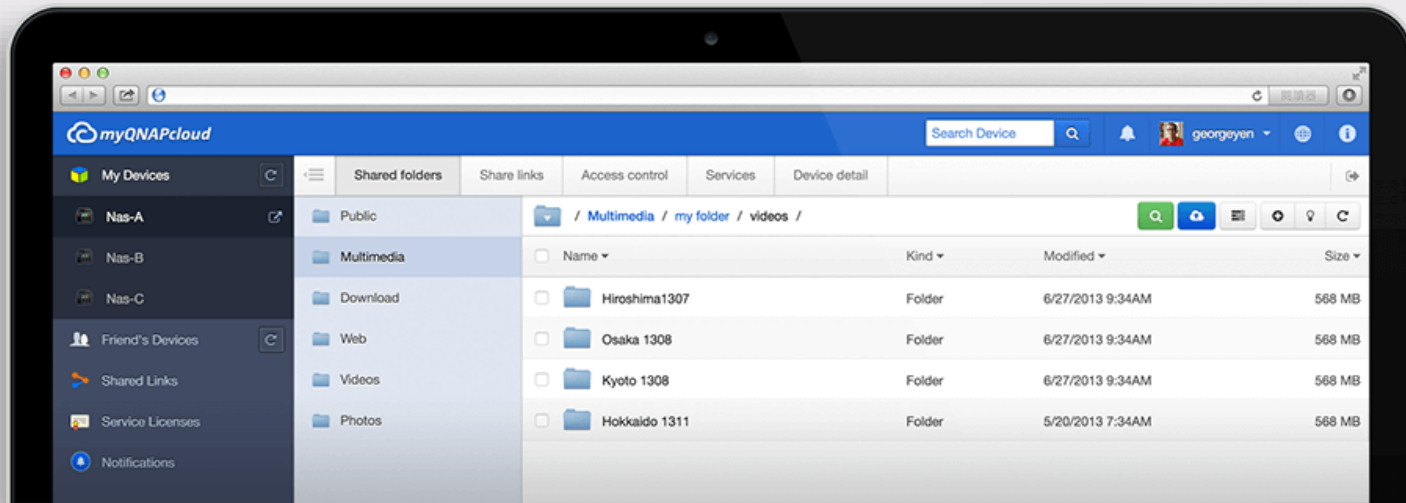
File Station



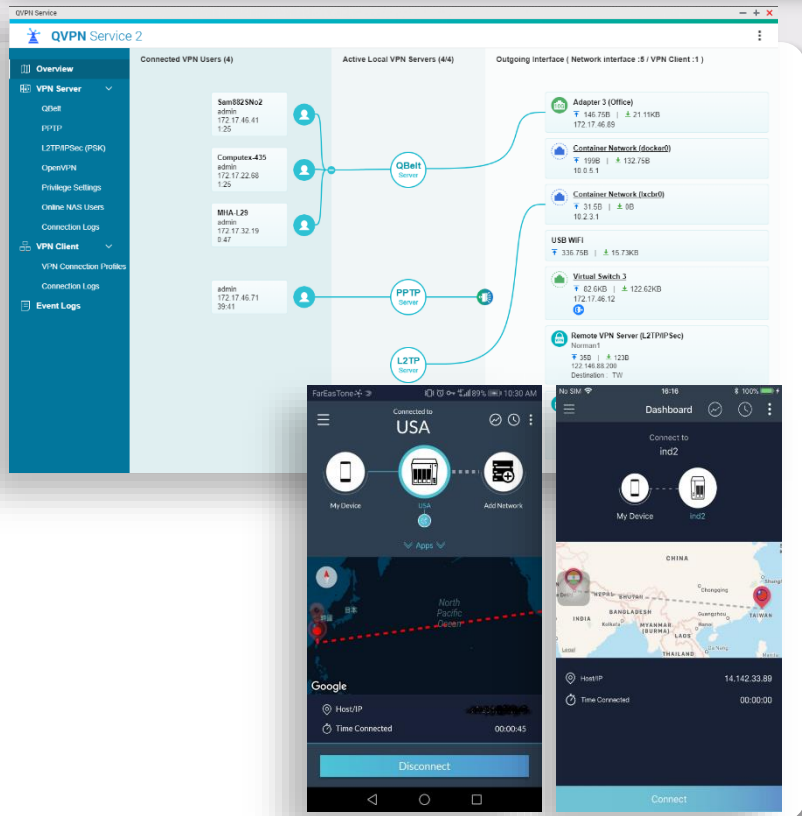
# Connect to home or office NAS with myQNAPcloud and QNAP ID (QID)

## Anytime / Anywhere

Register and login with Email  
or phone number



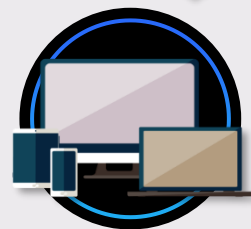
# QNAP QVPN and QBelt protocol for anywhere access



**Secure Encrypted Connection:**  
DTLS + SSL +  
AES-256 encryption

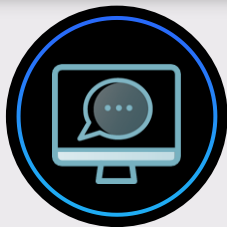


**New VPN protocol:**  
Decreases the chance of being  
detected



**Works on desktop & mobile  
devices:**  
Windows, macOS, Android, iOS

# Always get in touch with Notification Center



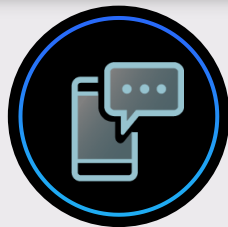
## Centralized setting

One interface to integrate all notification settings and operations



## Support multiple notification methods

Meet your various notification scenarios



## Highly flexible rule setting

Easily filter important messages you want to receive



## Multi-language support

Support 23 language & composed by professionals



## Double insurance

Notification history and test function ensure you don't miss one message

**Notification Center**

**Overview**

In Overview, you can view the number of messages sent over a specific period of time. You can also view the settings of notification rules, service accounts, and device pairing.

**System Notification Rules** More **Service Account and Device Pairing** More

Event Notifications	Alert Notifications	E-mail	SMS	Instant Messaging	Push Service
3	2	3	4	3	5
Active	Active	Active	Active	Active	Active

**System Logs** Last 50 Logs last 30 days: Warning 348 Error 6 More

S...	Date and ...	Users	Source IP	Application	Category	Content	Action
①	2018/11/04:05:37	System	127.0.0.1	myQNApCloud	CloudLink	[myQNApCloud] CloudLink service for myQNApCloud website is ready.	Settings
①	2018/11/00:47:13	System	127.0.0.1	Antivirus	Settings	[Antivirus] Updated virus definitions.	Settings

**View the System Logs**



# QVR Pro surveillance center with IP cams



**4GB or more RAM required**

**5,000+ compatible IP cameras**

**8 free recording channels**

**30 expandable channels w/ licenses**

**USB webcam support (UVC cams)**



**For 2GB RAM model:**

- **Surveillance Station 5.1**
  - 2 free recording channels
  - 32 expandable channels w/ licenses

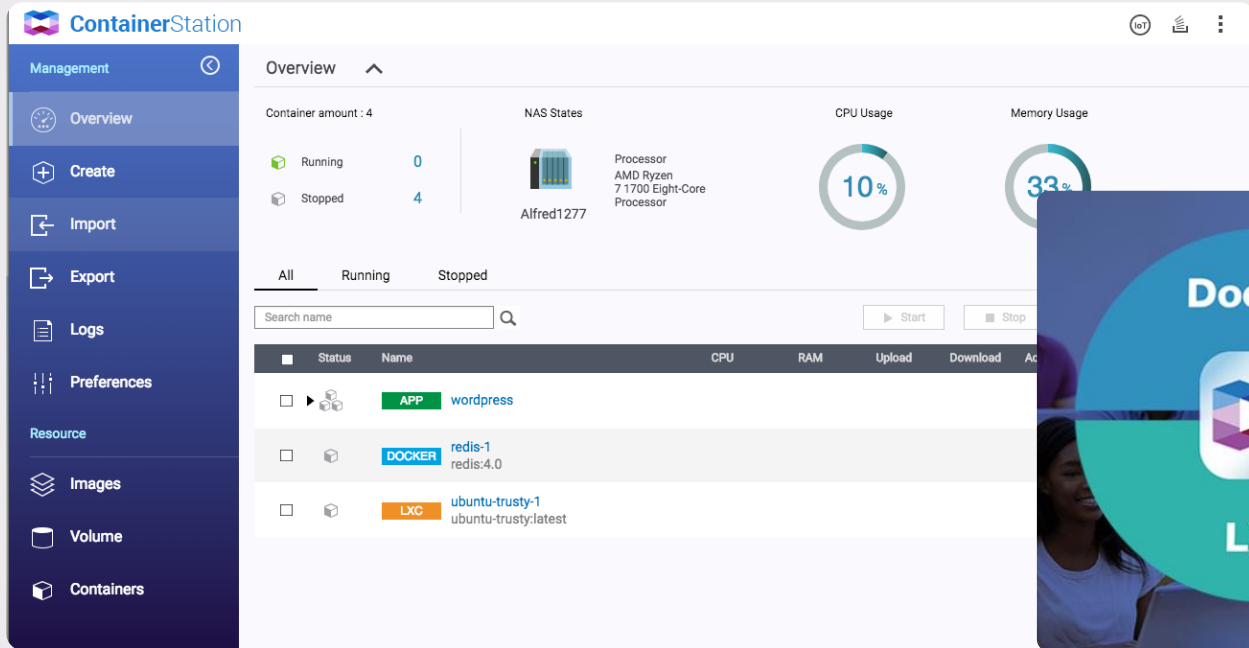
# Container Station for running multiple apps

## AI, IoT, Commonly-used Container Recommendation

- One-click installation wizard helps you quickly setup
- Supports Docker Compose YAML format to create applications

## Easily import/export containers


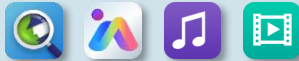
- Imports images or containers from PC or NAS
- Exports images or containers to NAS as backup



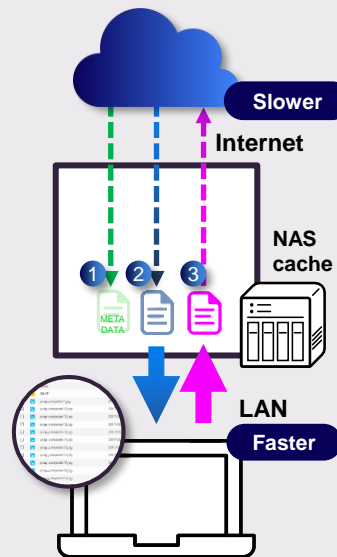
**Docker® Hub  
marketplace**  
Easy to download apps



# HybridMount provides two modes for file-based cloud storage gateway

	Network drive mount	File Cloud Gateway 
<b>Setup Method</b>	Mount cloud drives and file servers	Select "File Cloud Gateway" mode and create a dedicated cache space
<b>Connections</b>	No limit	2 free and perpetual connections. Purchase license for more connections
<b>Access Performance</b>	Depends on network speed	High performance thanks to caching
<b>Access in File Station</b>	Supported	Supported
<b>Access through SMB / NFS / AFP</b>	Partially supported	Supported
<b>Sync with the cloud</b>	Sync only when browsing	Sync constantly for quick access
<b>Integration with QTS Apps</b>	Not supported	Supported 

- Online collaboration
- File data analysis



# Use Virtual JBOD to expand NAS capacity

Max. 8 VJBOD connections



TS-451D2



VJBOD

1GbE  
iSCSI VJBOD



TS-832XU



TS-832X

# Economical and flexible QNAP expansion enclosures for multi-platform usage

QNAP TR and TL external storage enclosures have many advantages for NAS capacity expansion.



## Bigger capacity

- 2, 4, 8-bay choices
- NAS may support up to 2 enclosures



## Better compatibility: NAS or PC/server

- Expand NAS or server storage capacity or data migration between different hosts
- QNAP External RAID Manager and JBOD Manager for monitoring the JBOD status



## USB connectivity

- The most popular interface

### USB interface



TR-002



TR-004

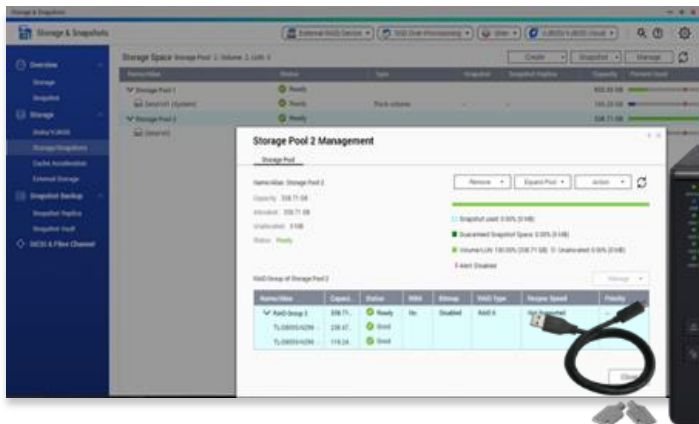


TL-D800C

# One enclosure for two different uses: internal expansion or external disk mode

## RAID & Storage Pool

All disks of TR & TL expansion units would be identified by Storage & Snapshot manager, then configure as a RAID of storage pool.



## External Disk Mode

Each disk acts as a single disk; it will show 8 independent disks with TL JBOD, or as a single disk or individual disks with TR RAID. This mode is also for cross-platform compatibility between OSes.



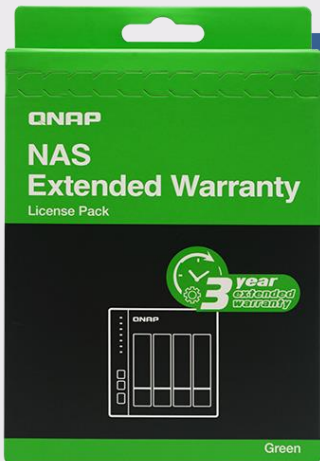
- TL & TR units cannot be configured as a RAID group with those internal disks from NAS.
- TR units can only support RAID 0/1/5/10 and JBOD modes.



# Extend warranty to 5 years to protect your assets

Standard 2-year warranty + optional 3-year extended warranty = 5 years of warranty

<https://www.qnap.com/service/product-warranty/>



**P/N: EXTW-GREEN-3Y**

- ✓ **Go to the warranty site**
- ✓ **Register the NAS**
- ✓ **Purchase the coverage**



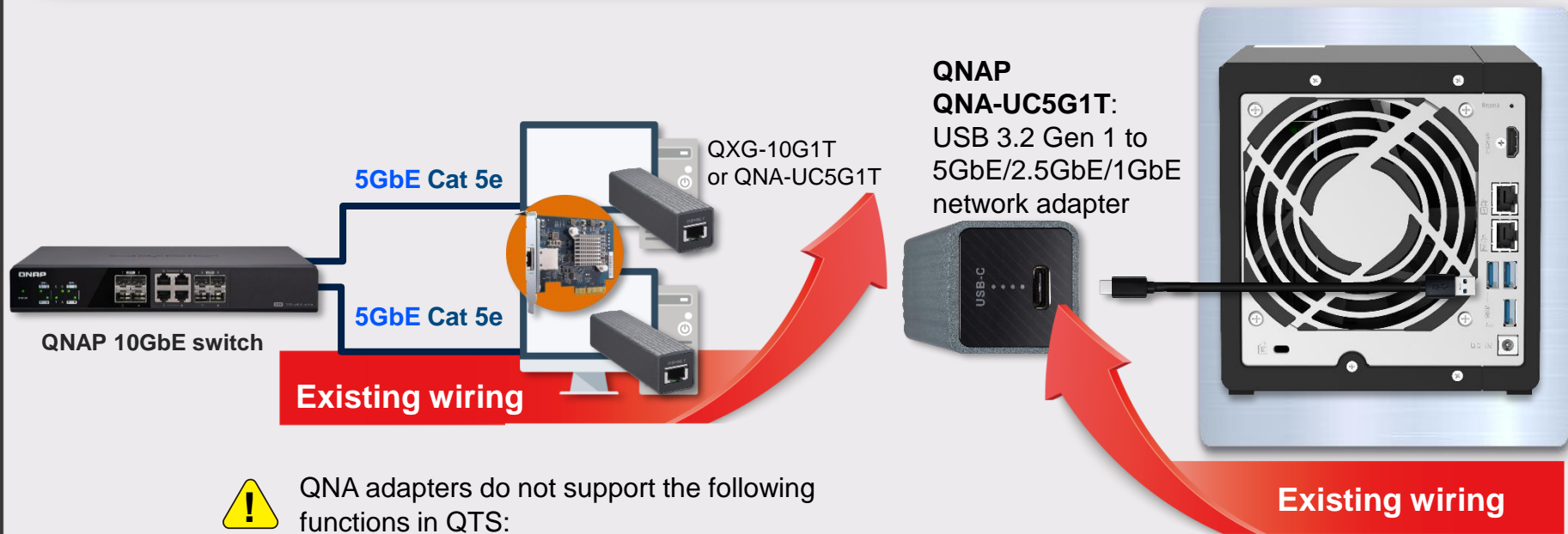
## 2-year Standard Warranty

- 2-year standard warranty service that comes in effect at the time of purchase.
- Free repair and part replacement for products under normal use during warranty period. (Spare parts and consumables are excluded)

## Optional 3-year Extended Warranty

- Extending your warranty with this paid service, available within 90 days of the initial unit purchase.
- Offers identical service to standard warranty.

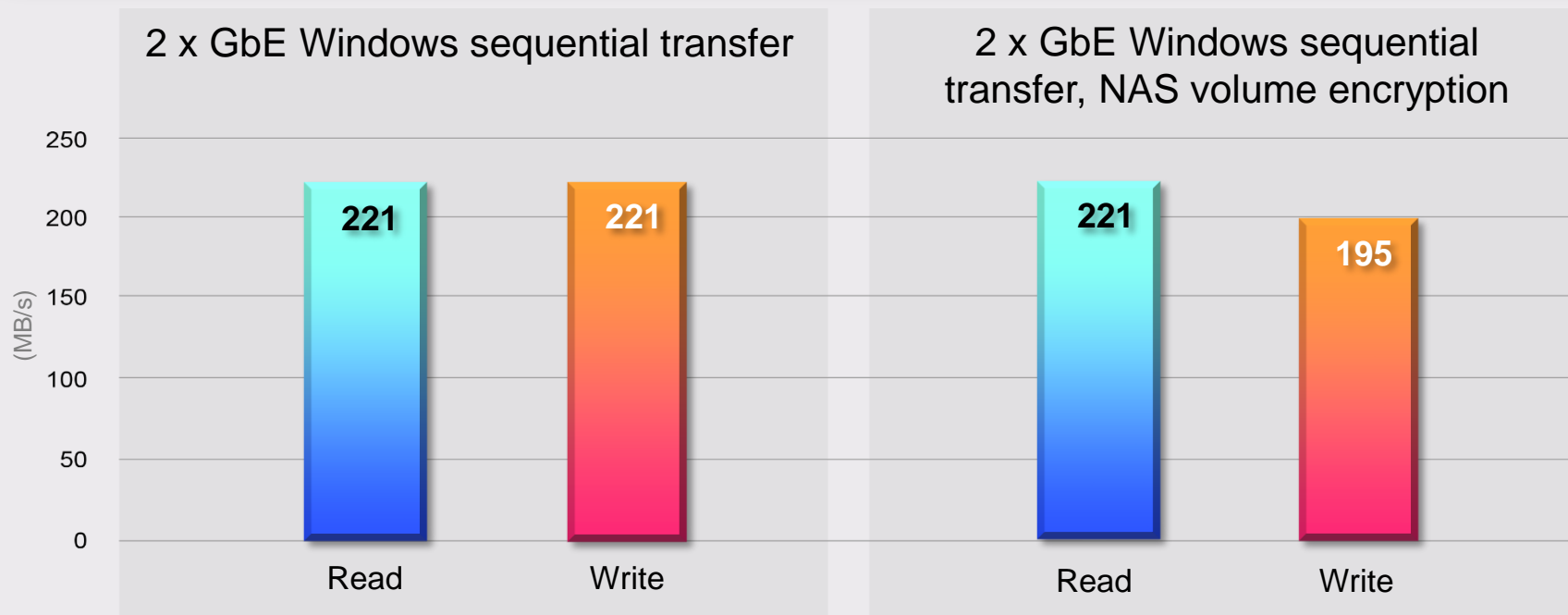
# USB to 5GbE/2.5GbE adapter with QNAP QNA-UC5G1T



QNA adapters do not support the following functions in QTS:

- ◆ Port trunking (LACP)
- ◆ DHCP server
- ◆ RADVD server
- ◆ Static route

# 4 x HDDs, RAID 5, 2 x GbE performance data



Tested in QNAP Labs. Figures may vary by environment.

Test environment:

NAS: TS-451D2-4G, QTS 4.4.2, 4 x Seagate ST1000NM0033 1TB HDDs, RAID 5, thick volume

Client PC: Windows 10 Pro, Intel Core i7-6700 3.4 GHz, 32GB RAM °


IOmeter: RAM\*4, 30-sec ramp up time, 3-min seq. run time, 2 workers,

64-outstanding °

**DEMO**



# A complete lineup for building up your home cloud

NAS models	TS-451D2 	TS-251D	TS-253D/453D/653D	TS-251+/451+	TS-231P3/431P3
Processor	Intel Celeron J4025 2-core 2.0 GHz, up to 2.9 GHz		Intel Celeron J4125 4-core 2.0 GHz, up to 2.7 GHz	Intel Celeron J1900 4-core 2.0 GHz, up to 2.42 GHz	Annapurna Labs AL314 4-core 1.7 GHz
Memory	DDR4, max. 8 GB			DDR3L, max. 8 GB	DDR3, max. 8 GB
PCIe slot	---	PCIe 2.0 x4	<ul style="list-style-type: none"> <li>253D: PCIe 2.0 x4</li> <li>453D/653D: PCIe 2.0 x2</li> </ul>	---	---
1GbE port	2	1	---	2	1
2.5GbE port	With a USB adapter	With a PCIe or USB adapter	2	With a USB adapter	1
5GbE port	With a USB adapter	With a PCIe or USB adapter	With a PCIe or USB adapter	With a PCIe or USB adapter	With a USB adapter
10GbE port	---	With a PCIe adapter	With a PCIe adapter	---	---
USB port	4 x 3.2 Gen 1	2 x 3.2 Gen 1 + 3 x 2.0	2 x 3.2 Gen 1 + 3 x 2.0	2 x 3.2 Gen 1 + 2 x 2.0	3 x 3.2 Gen 1
SSD cache	Yes	Yes	Yes	Yes	Yes
HDMI output	4K 60Hz	4K 60Hz	4K 60Hz	1080P 30Hz	---

**QNAP**

# TS-451D2

*Impressive,  
yet affordable!*

Home cloud. Done.



**QNAP**

**DISTRIBUIDO EN MÉXICO POR TELSA MAYORISTA**

Oriente 65A No. 2848, Asturias, Cuauhtémoc, 06850, CDMX, México

Tels.: +52 (55) 5740 2142 / 5740 0606 • [ventas@telsa.com.mx](mailto:ventas@telsa.com.mx) • [www.telsa.com.mx](http://www.telsa.com.mx)

Síguenos en: [Twitter.com/TelsaMayorista](https://twitter.com/TelsaMayorista) • [Facebook.com/TelsaMexico](https://facebook.com/TelsaMexico)

**telsa**  
La Alternativa en Conectividad  
Más de 33 años de experiencia en soluciones de TIC

Contáctanos:



Copyright © 2020 QNAP Systems, Inc. All rights reserved. QNAP® and other names of QNAP Products are proprietary marks or registered trademarks of QNAP Systems, Inc. Other products and company names mentioned herein are trademarks of their respective holders.